

2014 - 2016

2016 - 2018

# LOCAL BUSINESS GUIDE

SPONSORED BY THE WOBURN BUSINESS ASSOCIATION



## WOBURN BUSINESSES TELL THEIR STORIES

Stories begin on **page 15**

Directory on **page 36**

Chamber Profiles™

# Taking care of our local communities is what matters most to us.

We value the relationship we have with all of our neighbors here in Woburn.



**NORTHERN BANK**  
*Neighbors you can bank on.*

Rated top performing community bank by SNL Financial 5 years in a row

275 Mishawum Road  
Woburn, MA 01801  
781.937.5400



89 Elm Street  
Woburn, MA 01801  
781.937.5439

215 Lexington Street  
Woburn, MA 01801  
781.937.5423

303 Main Street  
Woburn, MA 01801  
781.933.6606



Member FDIC

NBTC.com | 800.273.6908 |  



**“Home of the Italian Thin Crust Pizza”**

**Let us cater your next party!**

[www.lisaspizzeriawoburn.com](http://www.lisaspizzeriawoburn.com)

**781-938-0123**

**903A Main Street, Woburn**



**“Hands down, the best burgers in Woburn”**

880 Main Street | Woburn, MA  
781-281-0277 | [www.wuburger.com](http://www.wuburger.com)

Premium catering in Woburn and surrounding cities.



Over 70 Years of Honesty, Integrity & Reliability

60 Cummings Park Drive  
Woburn, MA 01801

[www.bostonappliance.net](http://www.bostonappliance.net)  
SHOP ONLINE WITH LIVE CHAT

**(781) 935-2700**

SUB-ZERO WOLF FRANKIE BOSCH LG GE MAYTAG Electrolux FRIGIDAIRE Whirlpool



APPLIANCES FOR ANY BUDGET



**Holiday Inn Express  
Boston North-Woburn**

P: (781) 935-7666

FREE



Hot Breakfast



Wi-Fi



Parking

- New Whirlpool
- Walking Distance to Restaurants and Shopping
- Easy Access to I-95 and I-93
- 1 mile from Mishawum Station

**WOBURN'S  
NEWEST &  
MOST  
MODERN  
HOTEL**

[WoburnMaHotel.com](http://WoburnMaHotel.com)



**WAXY O'CONNORS**  
IRISH PUB + RESTAURANT

**1 RAININ RD, WOBURN, MA 01801**  
**WAXYS.COM**



## WOBURN BUSINESS ASSOCIATION



The Woburn Business Association (WBA) is a membership organization consisting of companies located in Woburn, Massachusetts. Memberships are also available to those firms who are situated elsewhere, but do business in Woburn.

The purpose of the Woburn Business Association is to promote and protect Business Interests in the City of Woburn and provide Networking Services for the Business Community.

This Guide to Local Businesses was mailed to every home in Woburn in January 2016, in an effort to give a broader voice of the WBA Members to the Woburn residents. We hope you will consider it a valuable resource and enjoy learning more about the people behind the businesses in your community.

### MISSION STATEMENT

*To promote and protect the business interests of WBA members by working with our local government and the residential community to create an environment in which businesses can thrive.*

*To energize the interaction of businesses in Woburn as suppliers & customers, resulting in the further growth of our companies.*



## GOALS

**City Enhancement** - To Work with City Officials for the betterment of Woburn business areas, roads, and highways for the benefit of the business and residential communities.

**Networking System** - To assist our membership with their efforts to further broaden their business horizons.

**Images** - To improve the image of "Business" in the community by developing an awareness of residential and social concerns. To publicize the benefits of business to the City of Woburn.

**Accessibility** - To be accessible to new member companies who may need assistance in their transition to our local community.

## Chamber Profiles™

10,000 copies of this Local Business Guide were printed and mailed, free of charge, to every home in Woburn and to all WBA Members. The Guide can also be found online at [www.WoburnBusiness.org](http://www.WoburnBusiness.org). The purpose of this Guide is to introduce Woburn residents to the local businesses and owners in their town.

Chamber Profiles and Indie Owned have published profile-based publications for the following business communities: Allston, Arlington, Bedford, Belmont, Brighton, Brookline, Concord, Everett, Jamaica Plain, Newton, Malden, Medford, Middlesex West, Reading, North Reading, Roslindale, Wellesley, Winchester, Waltham, and Woburn. Each publication was mailed, free of charge, to the homes in the respective towns.

All content submitted for publication is deemed advertising. Indie Owned, LLC is not responsible for errors in advertising beyond the original cost of participation. Indie Owned, LLC reserves the right to edit and/or reject any print or online content. Indie Owned, LLC is not responsible for the validity of claims or content made by advertisers. All rights reserved. Reproduction of material appearing in any Chamber Profiles publication is prohibited without the written permission of the publishers.

Indie Owned, LLC d/b/a Chamber Profiles  
258 Harvard Street #333 Brookline, MA 02446  
617.264.0594

[Publisher@ChamberProfiles.com](mailto:Publisher@ChamberProfiles.com)  
[ChamberProfiles.com](http://ChamberProfiles.com)  
Copyright ©2016 by Indie Owned, LLC

# Better banking does exist.

**THE RIGHT INSURANCE  
COVERAGE AT THE  
RIGHT PRICE  
FOR YOUR FAMILY &  
YOUR BUSINESS**

Tony Call  
Owner, Reading Asphalt



**ANYTIME,  
ANYWHERE ACCESS  
MOBILE APP &  
TEXT ALERTS**

Rob LaBelle & Mark Murphy  
Owners, LaBelle Roofing



**A REAL PARTNER  
BUSINESS BANKING  
IDEAS & RESOURCES**

Charla Jones  
Owner, Eu2Be Skin Care



An independent regional bank helping businesses and families grow and thrive since 1855. We make banking easy with extended morning, evening and weekend hours. And with locations throughout the North Shore and Middlesex County, it couldn't be easier. Now that's better.

**Salem Five:**  
443 Main Street  
781.935.2936

**Salem Five Insurance:**  
445 Main Street  
781.993.3100

Member FDIC Member DIF



[salemfive.com](http://salemfive.com) | 800.4SALEM5

BANKING • INSURANCE • INVESTMENTS

**SalemFive**  
Keep Talking. We're Listening.

Insurance products offered through Salem Five Insurance Services, LLC. Insurance products are not FDIC Insured • No Bank Guarantee • Not Bank Deposits • Not Insured by any Federal Government Agency

## Let Us Help Your Business Thrive!

Patriot Community Bank offers flexible business checking and savings options as well as convenient services designed to meet your banking needs. Our loan programs, including SBA Loans, can assist you in growing and achieving your business goals.

Stop in or call to learn more about the ease of banking with us, a true community bank!

Speak with a Business Banking Specialist today.



**PATRIOT**  
COMMUNITY BANK



**JOHN M. O'DONNELL**  
President & CEO

**[www.patriotcb.com](http://www.patriotcb.com) - 781-935-3318**  
237 Lexington Street, Woburn MA 01801

Member FDIC  
Member SIF



Read about us on page 26

## TABLE OF CONTENTS

Profiled businesses and display advertisers in bold

|  |               |   |               |
|--|---------------|---|---------------|
| <b>1-800-GOT-JUNK</b>                        | <b>11</b>     | <b>Dole and Bailey Inc.</b>                             | <b>36</b>     |
| A. Cierri & Sons Inc.                        | 39            | Domenic Sicari Associates, LTD                          | 39            |
| ABPRO Corp.                                  | 38            | Drains by James Inc.                                    | 44            |
| <b>ACP Cleaning Inc.</b>                     | <b>7, 15</b>  | Draper Realty LLC                                       | 45            |
| Advantage Sports Medicine & Physcial Therapy | 43            | Dunkin Donuts (A.J.P Donuts, Inc.)                      | 37            |
| AL Prime Energy - J&R Service                | 37            | Dunkin Donuts (RVN Inc.)                                | 37            |
| Albert Fitzgerald Inc.                       | 38            | Dunkin Donuts - Winn St.                                | 37            |
| All Owners Drain Cleaning, Inc.              | 44            | Dunkin Donuts c/o Jatton Management Co.                 | 37            |
| Allen & Major Associates Inc.                | 40            | E-Z Way Centers   | 45            |
| Ambius                                       | 38            | Edward Jones  | 41            |
| American Tower Corporation                   | 46            | Elements Massage of Woburn                              | 43            |
| Anderson Oil Service Inc.                    | 41            | Execuspace Construction Corp.                           | 39            |
| Ashford Corp                                 | 44            | Fagan Electrical Service Inc.                           | 40            |
| <b>Athletic Evolution</b>                    | <b>14</b>     | Fairfield Inn   | 42            |
| Atlantic Plywood Corp.                       | 46            | <b>Fitzgerald Physical Therapy Associates</b>           | <b>14, 20</b> |
| <b>Barker Lumber Co., Inc.</b>               | <b>15</b>     | Fresh City  | 45            |
| <b>Batteries Plus Bulbs</b>                  | <b>16</b>     | George W. Gately  | 39            |
| <b>BEST WESTERN PLUS New Englander</b>       | <b>16, 24</b> | Gerrior Masonry & Landscape Construction                | 42            |
| <b>Boston Appliance</b>                      | <b>3, 17</b>  | Glenbrook Estates                                       | 36            |
| Boston Restaurant Associates                 | 45            | Gravestar Inc.  | 44            |
| Boston Welding & Design                      | 39            | Gregstrom Corporation                                   | 44            |
| <b>Boyd's Direct</b>                         | <b>17</b>     | Hampton Inn   | 42            |
| <b>Cafe Escadrille</b>                       | <b>18</b>     | Hartmere Associates                                     | 44            |
| Carbone Commercial R.E., Inc.                | 44            | Heart Healthy Scrum                                     | 38            |
| <b>Century 21</b>                            | <b>43</b>     | High Cap Financial                                      | 41            |
| Century Bank                                 | 37            | <b>Hillside Florist</b>                                 | <b>40</b>     |
| Champion Cleaners                            | 38            | <b>Holiday Inn Express</b>                              | <b>3</b>      |
| Coakley & Trainor DDS PC                     | 40            | Howland Development Co.                                 | 44            |
| Collins Management Inc.                      | 44            | Image Tech - Xerox                                      | 38            |
| Colonial Package Store, Inc.                 | 43            | J. Mulkerin Realty                                      | 45            |
| Colorworks Paint & Ace Hardware, Inc.        | 43            | J.N. Phillips Auto Glass                                | 37            |
| <b>Comfort Inn</b>                           | <b>13</b>     | James McKeown Boys & Girls Club of Woburn               | 39            |
| Compass Realty Associates, LLC               | 44            | Jamieson Management Co., Inc.                           | 36            |
| Connoisseurs Products Corp                   | 42            | Joe's American Bar and Grill                            | 45            |
| Copy Pro                                     | 40            | John's Sewer and Pipe Cleaners                          | 44            |
| <b>Council of Social Concern</b>             | <b>18, 41</b> | K&N Oil Service   | 41            |
| Courtyard- Marriott                          | 42            | <b>Kamco Supply Corp. of Boston</b>                     | <b>39</b>     |
| Cranes Court Ind. Park LLC                   | 44            | Kraft Foods Atlantic Gelatin                            | 41            |
| Crest View Plaza                             | 38            | <b>L.J. Herzog Construction &amp; Development, Inc.</b> | <b>9</b>      |
| <b>Crowne Plaza Boston/Woburn</b>            | <b>19</b>     | Landscape Express Inc.                                  | 42            |
| Culik Law PC                                 | 36            | Lannan Chevrolet Oldsmobile Inc.                        | 36            |
| Cummings Properties LLC                      | 45            | Larry Levine Business Development                       | 39            |
| Custom Machine Inc.                          | 43            | <b>Lawless Chrysler Jeep Inc.</b>                       | <b>44</b>     |
| Dance Studio 665                             | 41            | Lennon Insurance Agency Inc.                            | 36            |
| <b>Dave and Buster's</b>                     | <b>19</b>     | Lifeline Ambulance Service                              | 43            |
| David I Gilgun and Co                        | 40            | <b>Lisa's Family Pizzeria</b>                           | <b>2</b>      |
| De Bourke Company                            | 43            | Litchfield Co. Inc.                                     | 39            |
| Derro Construction Corp.                     | 39            | <b>Little Folks Day School</b>                          | <b>20, 38</b> |



## Customized Services

*tailored to fit your needs*

## Responsible Services

*help you meet your initiatives*

## Flexible Services

*meet every challenge*

- |                                |                                  |
|--------------------------------|----------------------------------|
| ✓ Green Cleaning Programs      | ✓ Day Cleaning / Porter Services |
| ✓ Light-Duty Maintenance Staff | ✓ Floor and Carpet Care          |
| ✓ Groundskeeping / Landscaping | ✓ Window Washing                 |
| ✓ Snow Removal                 | ✓ 24 Hour Service                |

P.O. Box 2411 • Woburn, MA

Phone 781.932.0500 • Toll-Free 800-655-0390

Fax 781.932.0589 • [www.acpcleaning.com](http://www.acpcleaning.com)

## TABLE OF CONTENTS

Profiled businesses and display advertisers in bold

|   |               |  |               |
|---|---------------|--|---------------|
| <b>Locks &amp; Keys of Woburn Inc.</b>            | <b>12</b>     | Russell Farm   | 40            |
| Lynch-Cantillon Funeral Home                      | 41            | <b>S. B. Goddard &amp; Son Co.</b>                               | <b>28</b>     |
| Lytron, Inc.                                      | 46            | <b>Salem Five Bank</b>   | <b>5</b>      |
| M & L Transit Systems Inc.                        | 46            | <b>Scafidi Juliano, LLP</b>                                      | <b>25, 28</b> |
| M.P.M. Services                                   | 42            | <b>Scheehan, Schiavoni, Jutras &amp; Magliocchetti Attorneys</b> | <b>29</b>     |
| Madico, Inc.                                      | 46            | Scrubadub Auto Wash Centers                                      | 38            |
| Maggiore Construction                             | 39            | <b>Seaver Construction, Inc.</b>                                 | <b>29</b>     |
| Mahoney's Auto Body                               | 37            | Serv Pro of Burlington/Woburn                                    | 39            |
| <b>Mahoney's Rocky Ledge Farm</b>                 | <b>21</b>     | Service Master Clean   | 38            |
| Marshall's  | 40            | Showcase Cinemas   | 46            |
| <b>Martini Insurance Agency Inc.</b>              | <b>21, 25</b> | <b>Skyworks Solutions, Inc.</b>                                  | <b>30, 47</b> |
| Masa Restaurant                                   | 45            | Something Sweet Without Wheat                                    | 37            |
| Mascon Inc.                                       | 42            | <b>Stanton &amp; Co.</b>   | <b>30</b>     |
| <b>Massachusetts Veterinary Referral Hospital</b> | <b>9, 22</b>  | <b>Stirling Technologies</b>                                     | <b>31</b>     |
| <b>McLane Middleton</b>                           | <b>22</b>     | Stor U Self  | 45            |
| <b>McLaughlin-Dello Russo Funeral Home</b>        | <b>12, 23</b> | Supportive Living, Inc.  | 42            |
| Michienzi Construction & Development Inc.         | 39            | Taste of Brazil  | 45            |
| Micros Northeast, Inc.                            | 39            | <b>TeamLogic IT</b>  | <b>31</b>     |
| Moriarty Financial Group, LLC                     | 41            | The Begley Companies   | 45            |
| <b>Murray's Towing</b>                            | <b>13</b>     | The Great Mandarin Restaurant                                    | 45            |
| Murtha Cullina LLP                                | 36            | The Restaurant   | 45            |
| National Development of N.E.                      | 45            | Tighe Warehousing & Distribution Inc.                            | 46            |
| New England Copy Specialists                      | 40            | Tocci Building Corporation                                       | 39            |
| New England Resins & Pigments                     | 38            | Town Fair Tire   | 37            |
| North Shore Construction & Development            | 45            | U.S. Pavement Services   | 43            |
| North Suburban Family YMCA                        | 41            | USA Demolition Inc.  | 40            |
| North Woburn Package Store, Inc.                  | 43            | USI Insurance Services LLC                                       | 42            |
| <b>Northern Bank</b>                              | <b>2, 23</b>  | Vacuum Barrier Corp  | 40            |
| Nupath  | 43            | Waste Management of Massachusetts Inc.                           | 40            |
| Organix, Inc.                                     | 38            | <b>Waxy O'Connors Irish Pub</b>                                  | <b>3, 32</b>  |
| <b>P &amp; M Locksmith Services Inc.</b>          | <b>45</b>     | Whit Builder and Supply Inc.                                     | 38            |
| Palmer Spring Company                             | 37            | <b>Winchester Hospital</b>                                       | <b>9, 32</b>  |
| <b>Patriot Community Bank</b>                     | <b>5, 26</b>  | Windham Wood Industries  | 46            |
| Paul J Dionne Co Inc.                             | 44            | <b>Woburn Bowladrome</b>   | <b>33</b>     |
| <b>Peoples' United Bank</b>                       | <b>13</b>     | Woburn Brake & Alignment Co.                                     | 37            |
| Personal Movers                                   | 43            | <b>Woburn Business Association</b>                               | <b>33</b>     |
| <b>Peterson Party Center</b>                      | <b>26</b>     | Woburn Concrete & Masonry Supply                                 | 43            |
| Place Lane Condominium Trust                      | 39            | Woburn Glass   | 41            |
| PrimePay  | 43            | <b>Woburn Historical Society</b>                                 | <b>34</b>     |
| ProEx Physical Therapy                            | 41            | Woburn Moose Family Center                                       | 39            |
| R.C. Olsen Cadillac, Inc.                         | 36            | <b>Woburn Municipal Federal Credit Union</b>                     | <b>34</b>     |
| <b>RE/MAX Legacy</b>                              | <b>27, 37</b> | <b>Woburn Nursing Center (Salter Healthcare)</b>                 | <b>24, 35</b> |
| Reading Cooperative Bank                          | 37            | Woburn Square Mobil  | 37            |
| <b>Residence Inn by Marriott Boston Woburn</b>    | <b>27</b>     | <b>Woburn Toyota</b>   | <b>35, 48</b> |
| Resource Horizons Group, LLC                      | 36            | Woburn Truck and Auto Inc.                                       | 37            |
| <b>Richard L. Black Inc.</b>                      | <b>42</b>     | <b>Wuburger</b>  | <b>2</b>      |
| Rierner & Braunstein                              | 36            |  |               |
| Riverside Car Care Inc.                           | 37            |  |               |



20 Cabot Road, Woburn, MA 01801  
TEL 781.932.5802 WEB [www.IVGHospitals.com](http://www.IVGHospitals.com)

... Because he's always there for her,  
We'll always be here for him.

Massachusetts Veterinary  
Referral Hospital:

Exceptional Veterinary Emergency Care,  
All Day, Every Day

 **Massachusetts Veterinary  
Referral Hospital**  
A Member of the IVG Network of Hospitals



**COMMERCIAL SNOW PLOWING**

38 HIGH STREET, SUITE 1, WOBURN, MA 01801

888.99.NESIM ♦ 781.937.7800

[WWW.NESIM.COM](http://WWW.NESIM.COM)



Call 866-WIN-HOSP  
for a physician referral  
(1-866-946-4677)

**Nursing Excellence**



**High Quality Care**



**Premier  
Award for Quality**

**Top Employer**

FORTUNE 100  
Boston Globe  
Boston Business  
Journal

**Surgical Excellence**

**Comprehensive Women's  
Health Services**

**Exceptional Cancer Care  
Close to Home**

**State-of-the-Art Imaging  
Technologies**

**Integrative Therapies and  
Health Education Programs**

41 Highland Avenue, Winchester, MA 01890  
[www.winchesterhospital.org](http://www.winchesterhospital.org) ■ 781-729-9000



## CATEGORY INDEX OF PROFILES AND DISPLAY ADS

|   |        |  |        |
|---|--------|--|--------|
| <b>Accountants</b>                                    |        | S. B. Goddard & Son Co.  | 28     |
| Richard L. Black Inc                                  | 42     | <b>Locksmiths</b>  |        |
| Stanton & Co.   | 30     | Locks & Keys of Woburn Inc/Glass                               | 12     |
| <b>Advertising / Design</b>                           |        | P & M Locksmith Service Inc                                    | 45     |
| Stirling Technologies                                 | 31     | <b>Lumber Materials / Hardware</b>                             |        |
| <b>Appliances</b>                                     |        | Barker Lumber Co., Inc.  | 15     |
| Boston Appliance                                      | 3, 17  | <b>Medical / Physical Therapy</b>                              |        |
| <b>Attorneys</b>                                      |        | Fitzgerald Physical Therapy Associates                         | 14, 20 |
| McLane Middleton                                      | 22     | <b>Printing / Graphics / Promotional Products</b>              |        |
| Scafidì Juliano, LLP                                  | 25, 28 | Boyd's Direct  | 17     |
| Scheehan, Schiavoni, Jutras & Magliocchetti Attorneys | 29     | <b>Real Estate / Commercial, Rental, Brokerage, Management</b> |        |
| <b>Auto Dealers</b>                                   |        | RE/MAX   | 27, 37 |
| Lawless Chrysler Jeep Inc.                            | 44     | <b>Real Estate Development / Residential &amp; Commercial</b>  |        |
| Woburn Foreign Motors                                 | 35, 48 | Century 21 Crowley-Braese                                      | 43     |
| <b>Auto Services</b>                                  |        | <b>Rental Equipment</b>  |        |
| Murray's Towing                                       | 13     | Peterson Party Center  | 26     |
| <b>Banks</b>  |        | <b>Restaurants</b>   |        |
| Northern Bank   | 2, 23  | Best Western   | 24     |
| Patriot Bank  | 5, 26  | Cafe Escadrille  | 18     |
| People's United Bank                                  | 13     | Dave and Buster's  | 19     |
| Salem Five  | 5      | Lisa's Family Pizzeria   | 2      |
| Salem Five / Boyle Ins                                | 46     | Waxy O'Connors Irish Pub                                       | 3, 32  |
| Woburn Municipal Federal Credit Union                 | 34     | Wuburger (Lisa's Family Pizzeria)                              | 2      |
| <b>Batteries</b>                                      |        | <b>Veterinarians</b>   |        |
| Batteries Plus Bulbs                                  | 16     | Massachusetts Veterinary Referral Hospital                     | 9, 22  |
| <b>Bowling</b>  |        |  |        |
| Woburn Bowladrome                                     | 33     |  |        |
| <b>Building Materials</b>                             |        |  |        |
| Kamco Supply Corp. of Boston                          | 39     |  |        |
| <b>Cleaners</b>                                       |        |  |        |
| ACP Cleaning Inc.                                     | 7, 15  |  |        |
| <b>Community Resources/Non-Profits</b>                |        |  |        |
| Woburn Business Association                           | 33     |  |        |
| Woburn Historical Society                             | 34     |  |        |
| <b>Construction / Developers</b>                      |        |  |        |
| LT. Herzog Const & Dev Inc                            | 9      |  |        |
| <b>Contractors &amp; Construction</b>                 |        |  |        |
| Seaver Construction, Inc.                             | 29     |  |        |
| <b>Disposal &amp; Container Services</b>              |        |  |        |
| 1-800-GOT-JUNK?                                       | 11     |  |        |
| <b>Education / Schools</b>                            |        |  |        |
| Little Folk Day School                                | 20, 38 |  |        |
| <b>Electronic Manufacturer</b>                        |        |  |        |
| Skyworks  | 30, 47 |  |        |
| <b>Farm Stand / Garden Center</b>                     |        |  |        |
| Mahoney's Rocky Ledge Farm                            | 21     |  |        |
| <b>Fitness</b>  |        |  |        |
| Athletic Evolution                                    | 14     |  |        |
| <b>Florists / Gift Centers</b>                        |        |  |        |
| Hillside Florist                                      | 40     |  |        |
| <b>Food Service Distributors</b>                      |        |  |        |
| Dole & Bailey Inc                                     | 36     |  |        |
| <b>Funeral Services</b>                               |        |  |        |
| McLaughlin-Dello Russo Funeral Home                   | 12, 23 |  |        |
| <b>Hospitals / Healthcare / Supportive Living</b>     |        |  |        |
| Woburn Nursing Center (Salter Healthcare)             | 24, 35 |  |        |
| <b>Hotels / Inns</b>                                  |        |  |        |
| BEST WESTERN PLUS New Englander                       | 16     |  |        |
| Crowne Plaza Boston/Woburn                            | 19     |  |        |
| Holiday Inn Express                                   | 3      |  |        |
| Residence Inn by Marriott Boston Woburn               | 27     |  |        |
| <b>Human Services / Social Services</b>               |        |  |        |
| Council of Social Concern                             | 18, 41 |  |        |
| <b>Information Technology Services</b>                |        |  |        |
| TeamLogic IT  | 31     |  |        |
| <b>Insurance</b>                                      |        |  |        |
| Martini Insurance Agency Inc                          | 21, 25 |  |        |
| Salem Five / Boyle Insurance                          | 46     |  |        |

## INDEX TO DISPLAY ADVERTISERS

|  |    |
|--|----|
| 1-800-GOT-JUNK?                            | 11 |
| ACP Cleaning Inc.                          | 7  |
| Athletic Evolution                         | 14 |
| BEST WESTERN PLUS New Englander            | 24 |
| Boston Appliance                           | 3  |
| Century 21 Crowley-Braese                  | 43 |
| Comfort Inn                                | 13 |
| Council of Social Concern                  | 41 |
| Dole & Bailey Inc                          | 36 |
| Fitzgerald Physical Therapy Associates     | 14 |
| Hillside Florist                           | 40 |
| Holiday Inn Express                        | 3  |
| Kamco Supply Corp. of Boston               | 39 |
| Lawless Chrysler Jeep Inc.                 | 44 |
| Lisa's Family Pizzeria                     | 2  |
| Little Folk Day School                     | 38 |
| Locks & Keys of Woburn Inc/Glass           | 12 |
| LT. Herzog Const & Dev Inc                 | 9  |
| Martini Insurance Agency Inc               | 25 |
| Massachusetts Veterinary Referral Hospital | 9  |
| McLaughlin-Dello Russo Funeral Home        | 12 |
| Murray's Towing                            | 13 |
| Northern Bank & Trust Co.                  | 2  |
| P & M Locksmith Service Inc                | 45 |
| Patriot Bank                               | 5  |
| People's United Bank                       | 13 |
| RE/MAX                                     | 37 |
| Richard L. Black Inc                       | 42 |
| Salem Five                                 | 5  |
| Salem Five / Boyle Insurance               | 46 |
| Scafidì Juliano, LLP                       | 25 |
| Skyworks                                   | 47 |
| Waxy O'Connors Irish Pub                   | 3  |
| Winchester Hospital                        | 9  |
| Woburn Foreign Motors                      | 48 |
| Woburn Nursing Center (Salter HealthCare)  | 35 |
| Wuburger (Lisa's Family Pizzeria)          | 2  |

# 1-800-GOT-JUNK?®

NORTH AMERICA'S LARGEST JUNK REMOVAL SERVICE

- **We Do All The Loading and Cleanup**
  - Construction & Remodel Debris
  - Office, Home & Yard Clean-Ups
    - Old Furniture & Appliances
  - Single items to Multiple Truckloads

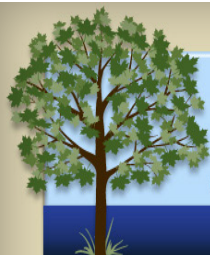


**Book and manage your jobs Online at**  
**[www.1800GOTJUNK.com](http://www.1800GOTJUNK.com)**



**Call Toll Free**

# 1-800-468-5865



# DELLO RUSSO

## FAMILY FUNERAL HOMES

Medford 781-396-9200

Wilmington 978-658-4476

Woburn 781-933-0083



306 Main Street  
Medford, MA 02155



60 Pleasant Street  
Woburn, MA 01801



374 Main Street  
Wilmington, MA 01887

[www.dellorusso.net](http://www.dellorusso.net)

Dello Russo Family Funeral Homes has three locations to serve you. We maintain our facilities with the utmost care to offer your family and friends a comfortable setting to gather at the loss of a loved one.

Please call or visit for a personal inspection, we welcome you.



### Auto - Home - Business - Safes

- Lockouts: Auto, Home, & Apartment
- Keys Made On Location - Deadbolt Installed
- Locks Rekeyed & Repaired - Pick-Proof Locks
- Transponder & High Security Auto Experts!

**24hourLOCKSMITHS.com**



**Emergency Services**

Serving Woburn and Surrounding Areas

**781-933-9999**



**AccurateGlass**  
Glass & Aluminum Services

**781-935-9999**

**Curtain Walls - Store Fronts - Glass Replacements - Mirrors**  
**Custom Shower Enclosures - Aluminum Windows**  
**Table Tops - Vinyl Replacement Windows**

**AccurateGlassandAluminum.com**

# Murray's Towing

Landoll & Lowbed Service  
Wheel Lift & Ramp Service  
Road Service

**(781) 935-1439**

89 Winn Street  
Woburn, MA 01801

**24 HOUR AUTO • HEAVY TRUCK TOWING • RECOVERY**



A Division of Murry Enterprises, Inc.

**Know-how makes your business, our business.**

**VISIT OR CALL US TODAY FOR ALL YOUR BUSINESS NEEDS.**

**400 West Cummings Park • Woburn • 781-938-5567**

**People's United Bank®** *What know-how can do®*

©2014 People's United Bank | Member FDIC | Equal Opportunity Lender

**14 HILL STREET, WOBURN, MA  
GM.MA110@CHOICEHOTELS.COM**

**TEL: 781 933-5363 FAX: 781-933-0004**



**WE OFFER COMPLIMENTARY HOT BREAKFAST AND WI-FI. WE ARE A SMOKE FREE HOTEL.  
ALL ROOMS HAVE A MICROWAVE, FRIDGE, 32" LCD TV, AND AN IN-ROOM SAFE.**

10 Year Anniversary

## Proud to call Woburn home since 2005!

*Athletic Evolution & AE CrossFit*

78c Olympia Ave. 781.935.7701

[www.athletic-evolution.com](http://www.athletic-evolution.com)

[www.aecrossfit.com](http://www.aecrossfit.com)



Come see how caring, compassion  
and determination leads to our...

*Patients for Life*

Fitzgerald Physical Therapy Associates has been providing the utmost in evidence-based, orthopedic physical therapy services to the Boston Metro North area for over a decade. At Fitzgerald Physical Therapy Associates the patient is never a number; our staff takes great pride in their personalized care and customized one-on-one treatments.

### *Locations*

#### **Malden**

110 Florence Street  
781.321.7000

#### **Woburn**

500 West Cummings Park, Suite 2100  
781.305.4656

### *Services*

Instrument-assisted soft tissue mobilization  
Kinesio® taping  
Selective Functional Movement Assessment (SMFA)  
Alter-G anti-gravity treadmill  
Manual therapy  
Post-operative care  
Gait training walking/running  
Orthotic fabrication  
Pediatric rehab  
Dry needling

**FPT accepts all major insurances**



[www.fitzgeraldpt.com](http://www.fitzgeraldpt.com)

## ACP Cleaning Inc.



300 Trade Center Park  
Suite 5400  
Woburn, MA 01888  
781-932-0500  
[www.acpcleaning.com](http://www.acpcleaning.com)

**ACP** Facility  
Services

From Fortune 500 companies to local start-ups, ACP is committed to keeping the workspace clean and well managed. That includes everyday office cleaning operations, frequent and thorough site inspections, and strategic planning for non-standard events. ACP makes sure that your facility is maintained to the highest standards.

ACP Facility Services believes in offering more to our customers, that's why we provide an extensive range of services and special add-on services. From developing Environmentally Preferable Housekeeping Guidelines for your facilities to satisfying short term maintenance staffing requirements, ACP will meet every challenge.

### **Clean. Attractive. Healthy. Safe.**

This is our goal for the diverse range of facilities that we service. ACP recognizes that your facility presents unique challenges. That's why we work closely with you to develop a cleaning service program that is tailored to fit your needs.

Through our years of experience, dedication to quality assurance, and a hands-on approach, we provide you with an unprecedented level of quality service and satisfaction.

## Barker Lumber Co., Inc.



10 Jefferson Avenue  
Woburn, MA 01801  
781-933-0057  
[sales@barkerlumber.com](mailto:sales@barkerlumber.com)  
[www.barkerlumber.com](http://www.barkerlumber.com)

### **HOURS OF OPERATION:**

|           |                    |
|-----------|--------------------|
| Mon - Fri | 7:00 am - 4:30 pm  |
| Sat       | 8:00 am - 12:00 pm |
| Sun       | Closed             |

**E. G. BARKER  
LUMBER CO.**

WOBBURN, MA

**"BUILD BETTER WITH BARKER".**

**781-933-0057**

E.G. Barker Lumber Co. is one of the oldest continuously operating business in Woburn. Our origins date back to 1889. Prior to 1889 it was operating under the name of J.B. McDonald Lumber. The yard is located at 36 Prospect St. The showroom and sales office are at 10 Jefferson Ave. In 1922 Guy E. Denison purchased Barker and it has been owned and operated by the Denison family for three generations. Barker's primary business is supplying quality

lumber, building materials, and construction related products to professional contractors, remodelers, and homeowners. We stock KD & PT framing lumber, finish boards, plywood, hardwoods decking, insulation, molding, siding, construction hardware, and tools. Doors, windows, and cabinets are special order. Our experienced staff is committed to being your construction partner from frame to finish.

## Batteries Plus Bulbs



173A Cambridge Road  
Woburn, MA 01801  
781-933-9093  
bp392@batteriesplus.net  
www.batteriesplus.com

**HOURS OF OPERATION:**  
Mon - Sat 8:00 am - 8:00 pm  
Sun 10:00 am - 6:00 pm

**Batteries  
+ Bulbs®**

We've been helping people, businesses, and towns with their battery needs for 10 years!

Now we can help you with your bulb and ballast needs, too!

- Huge Selection – 75,000 batteries and light bulbs
- Personal Service – to test and select the right product
- Knowledge – staff trained on products and applications
- Tech Center – on site to build battery packs

and repair devices

- Convenient Location – Woburn Four Corners
- Convenient Hours – seven days a week
- Recycling – batteries and bulbs

Any battery. Any bulb. For anything.

**10% discount to  
any WBA Member**

## BEST WESTERN PLUS New Englander



1 Rainin Road  
Woburn, MA 01801  
781-935-8160  
www.bestwestern.com

**HOURS OF OPERATION:**  
Check In 3:00 pm (15:00)  
Check Out 12:00 pm (12:00)  
Hotel Ratings: AAA-2 Diamond



Welcome to the BEST WESTERN PLUS New Englander!

Our hotel provides a superior location, and has it all with plenty of free parking and an indoor pool for relaxing.

Enjoy a free, full hot breakfast each morning that includes a buffet of hot waffles, fresh fruits and yogurt, a cereal bar, 100% Arabica coffee, and juices. The Waxy O'Connors Irish Restaurant and Pub is onsite, so there's no need to travel far for great Irish fare. Hotels in Woburn, MA are known for great hospitality, but we go above and beyond to make sure you feel

comfortable the moment you arrive.

Hotels near TD Garden have everything guests need for a great stay. Harvard Square and Fenway are just minutes away, and the excitement of downtown Boston is a short drive away. Hotels near Cambridge, MA are perfect for students, their visiting families, and professors and faculty members in town for an extended stay. You'll be close to the campus when staying at our welcoming Woburn hotel.

Reserve a room at BEST WESTERN PLUS New Englander right now!

## Boston Appliance



60 Cummings Park  
Woburn, MA 01801  
781-935-2700  
[www.bostonappliance.net](http://www.bostonappliance.net)  
[facebook.com/BostonApplianceCo](https://facebook.com/BostonApplianceCo)

### HOURS OF OPERATION:

|           |                   |
|-----------|-------------------|
| Mon - Fri | 9:00 am - 5:00 pm |
| Sat       | 9:00 am - 3:00 pm |
| Sun       | Closed            |



Why choose Boston Appliance ®? We have been owned and operated by the same family for over 60 years, and are well established in the Boston community. Our honest approach has rewarded us with a steady stream of referrals and repeat business from happy customers in the Greater Boston area. Our loyal customers visit us from Boston, Cambridge, Newton, Woburn, Lexington, East Boston, Lynnfield, South Boston, Wellesley, Arlington, Concord, and Wakefield, and countless other locations across New England.

Our showroom offers a refreshing change of pace from the big box stores. Our sales staff won't pressure you—instead, we draw upon decades of experience to answer your questions and empower you to choose the appliances that are right for your home. We won't push you to buy from a particular brand. Whether it's Sub-Zero, Wolf, Bertazzoni, BlueStar, Bosch, Electrolux, Frigidaire, or General Electric (GE), we just want you to love what you buy.

## Boyd's Direct



Graphic Design • Corporate Printing • Direct Mail • Advertising Specialties

1008 Maple Street  
Stoneham, MA 02180  
781-438-4003  
[djg@boydsdirect.com](mailto:djg@boydsdirect.com)  
[www.boydsdirect.com](http://www.boydsdirect.com)

### HOURS OF OPERATION:

|           |                   |
|-----------|-------------------|
| Mon - Fri | 8:00 am - 5:00 pm |
| Sat, Sun  | Closed            |

*Old Fashioned Values, Service and Quality Delivered with Today's Technology*

Boyd's Direct is a small business with Big Ideas. From design to print to mail, we can help you with your small print runs, large personalized marketing or fund-raising campaigns. With our highly skilled staff and our commitment to superior quality and service, we partner with your team to help you achieve success. From business cards to large banners and everything in between, we can make your message stand out. Our large line of advertising specialty products keeps your name in front of customers and prospects and helps you build your brand! Count on us for fast, dependable, high quality products and services.

## Cafe Escadrille



26 Cambridge Street  
Burlington, MA  
781-273-1916  
info@cafeescadrille.com  
www.CafeEscadrille.com



### CAFE ESCADRILLE

Fine Dining • Weddings • Events

#### LUNCH

Mon-Fri 11:30 am - 4:00 pm  
Sat 11:30 am - 3:00 pm

#### DINING

Mon-Thu 4:30 - 10:00 pm  
Fri 4:30 - 11:00 pm  
Sat 4:00 - 11:00 pm

#### LIGHT DINING

Mon-Fri 4:00 pm - Midnight  
Sat 3:00 pm - Midnight

For more than 40 years, Cafe Escadrille has been the top restaurant choice of Burlington, MA, offering a variety of unique dining experiences. In addition to its dining services, Cafe Escadrille is an ideal venue to host weddings, showers, and other special events.

### Dining

Cafe Escadrille is proud to offer you the best dining experiences, whether it be late-night appetizers at our famous mahogany bar, a casual drink with friends on our outside patio, or tableside prepared items in our Gourmet Room. Cafe Escadrille also features an extensive wine list and is one of the few restaurants in the area

that has a late-night menu served until midnight.

### Private Events

Over the years people have trusted so many of their special moments to Cafe Escadrille. Their elegant function facility is the perfect venue for events of all types. Because each event is as unique as you are, you are assigned an exclusive event planner dedicated to making your function one your guests will remember for a lifetime. All the details will be taken care of so you can actually enjoy your own event and guests! That, plus their legendary food and convenient location, make Cafe Escadrille the best choice for all of your private dining needs.

## Council of Social Concern



2 Merrimac Street  
Woburn, MA 01801  
781-935-6495  
www.socialconcern.org

**HOURS OF OPERATION:**  
Varies by program



Council of Social Concern was founded in 1969 by a group of local volunteers who were concerned about the needs of Woburn's low-income and minority families. Over the years, CSC has grown in response to the needs of local residents of all ages and ethnic backgrounds. CSC programs assist over 2,200 individuals each year from Woburn, Winchester, and beyond with the support of approximately 250 volunteers.

CSC provides the following services that focus on the needs of low-income and at-risk populations. The **Children's Center** is a National Association for the Education of Young Children-accredited childcare and early childhood education facility, providing full time, year-round care. The **Family Childcare System** offers

children early education and care in the homes of EEC-licensed, independent Family Childcare Educators. The **Parent Education Program** offers several 7-week sessions to help parents enhance their parenting skills. The **Supervised Visitation Program** provides a safe, neutral environment where parents and children can spend quality time together and reconnect. The **Food Pantry Program** provides food to individuals and families without adequate financial resources to meet basic needs. CSC also provides **Information & Referral** services.

For more information or assistance with any of these services, or to donate, please call 781-935-6495.

## Crowne Plaza Boston/Woburn



15 Middlesex Canal Park Road  
Woburn, MA 01801  
781-935-8760  
[www.hotelbostonwoburn.com](http://www.hotelbostonwoburn.com)

**HOURS OF OPERATION:**  
We are open 24 hours every day.



Fresh from a dramatic new renovation, the 200-room Crowne Plaza Boston Woburn combines exceptional service, extraordinary style, and upscale amenities in an entirely new way.

### Hotel Amenities and Guest Rooms

Amenities at our full service, nonsmoking hotel include ample free parking, an indoor pool, a new state-of-the-art fitness center, a new business center, and 40-inch televisions featuring over 60 HD channels including free HBO. Spacious and comfortable accommodations at our hotel include plush new Crowne Plaza Sleep Advantage Bedding and a wide array of upscale living amenities such as free high-speed Internet, work desks, coffeemakers, and upgraded bathrooms. Choose from a King Leisure Room, Two Queen Bedded Room, or a King Suite. For those looking for additional services, reserve accommodations on the Concierge Level.

### Dining

The Scoreboard Sports Bar and Grill was voted #1 in Boston four years in a row. Our hotel restaurant and bar provides an authentic dining experience where local residents go to watch Boston sports and enjoy live bands.

### Weddings, Reunions, and Special Events

Our helpful staff will make sure your party or banquet event goes smoothly. Both the Grand Ballroom and Middlesex Ballroom can accommodate up to 300 guests or can be broken down into smaller event spaces.

## Dave and Buster's



271 Mishawum Road  
Woburn, MA 01801  
781-519-7900  
[Woburn\\_Marketing@daveandbusters.com](mailto:Woburn_Marketing@daveandbusters.com)  
[www.daveandbusters.com](http://www.daveandbusters.com)

**HOURS OF OPERATION:**  
Sun - Thurs 11:00 am - Midnight  
Fri & Sat 11:00 am - 1:00 am



The ONLY place with a restaurant  
serving everything from  
wings to New York Strips,  
a great BIG Bar, sports lounge,  
and arcade with the latest games!

## Fitzgerald Physical Therapy Associates



500 West Cummings Park  
Suite 2100  
Woburn, MA 01801  
781-305-4656  
www.fitzgeraldpt.com



**Fitzgerald**  
Physical Therapy Associates

### HOURS OF OPERATION:

Mon - Fri 7:00 am - 7:00 pm  
Sat By Appointment  
Sun Closed

We accept all major health insurances. (Blue Cross Blue Shield, Tufts, Harvard Pilgrim, GIC, Medicare, Aetna, Cigna, Fallon, Mass Health, Worker's Comp, and Personal Injury)

At Fitzgerald PT, the patient is never a number. Our staff takes great pride in our personalized care and one-on-one treatments.

FPT's board-certified orthopedic physical therapists diagnose, manage, and treat disorders and injuries of the musculoskeletal system. They also help people recover from orthopedic surgery and return to competition. Our therapists blend science with inspiration, teaching you how to manage or prevent your health condition while motivating you during your treatment to function optimally. There's a reason why some of the best orthopedic groups and world-class personal trainers trust FitzPT with their clients' care!

Our early morning and evening hours accommodate our patients' busy work and family schedules.

Fitzgerald PT is owned and operated by Sean and Holly Fitzgerald. Holly was recently named *Competitor Magazine's* Best Sports Medicine provider in the Northeast region!

We are conveniently located at 500 West Cummings Park, on the second floor. We look forward to YOUR recovery!!

**15-minute free trial on  
Alter-G anti-gravity treadmill  
One per customer,  
subject to availability.  
Expires:11/30/17**

## Little Folks Day School



600 West Cummings Park  
Suite 1075  
Woburn, MA 01801  
781-935-9697  
www.littlefolksdayschool.com

**Little Folks  
Day School**

Little Folks Day School has been successfully guiding and educating preschool and pre-kindergarten children since 1982. In a safe and nurturing environment, these children have developed a positive attitude toward learning and discovered that learning is fun!

Our experienced and certified teachers provide both half-day and full-day preschool and pre-kindergarten programs. We are open Monday through Friday from 7AM to 5:30PM and have a fully equipped outdoor playground.

We thoroughly enjoy working on behalf of young children and promote standards of

excellence in our early childhood curriculum. Little Folks Day School is licensed by the Massachusetts Department of Early Education and Care.

In addition to our school year program, we offer a Fun in the Sun Summer Program!

Little Folks Day School welcomes you to visit with your child to meet the staff and experience the high quality of care and early education offered. We hope to meet you soon!

## Mahoney's Rocky Ledge Farm



242 Cambridge Street  
Winchester, MA 01890  
781-729-5900  
[www.mahoneysgarden.com](http://www.mahoneysgarden.com)

**HOURS OF OPERATION:**  
By Appointment

Mahoney's  
**SafeLawns**  
& Landscapes

While traditional fertilizers make your grass look green, they actually damage your soil's natural biological activity. The green color will fool you, but soon grass growing in soil without bioactivity will hunger for nutrients, and be vulnerable to attack by insects and diseases. The traditional remedy is to apply more synthetic fertilizers and pesticides. Before you know it your lawn is hooked on a chemical diet, and no longer is able to grow on its own.

Originating in 1980, SafeLawns has been a leader in full service organic lawn care. We have the extensive training, experience, and quality organic products to maximize your lawn's two interdependent living systems: grass and soil.

Organic lawns are not just better for your children, pets and planet, the investment to go organic pays for itself year after year by providing a naturally greener lawn that requires less maintenance and watering. SafeLawns' services include: Soil Testing and Analysis, Analysis-Based, SafeTea™ Liquid Compost Organic Soil Health Booster, Organic Fertilizer Application, Natural Grub Control, Natural Disease and Insect Management, Organic Solutions™ Weed Management, as well as non-toxic prevention of winter moth and wooly adelgid.

Call today and ask about our comprehensive soil analysis/consultation special.

## Martini Insurance Agency Inc.



6 Common Street  
Woburn, MA 01801  
781-935-0220  
[jcaldwell@martiniinsurance.com](mailto:jcaldwell@martiniinsurance.com)  
[www.martiniinsurance.com](http://www.martiniinsurance.com)

**HOURS OF OPERATION:**  
Mon - Thur 8:30 am - 5:00 pm  
Fri 8:30 am - 4:30 pm  
Sat, Sun Closed

 **MARTINI INSURANCE AGENCY**

"Our Success Depends On Your Satisfaction"

Martini Insurance Agency, Inc. was established by John Martini in 1960 and has been providing insurance coverage to meet the needs of our customers throughout greater Woburn. The insurance agency is now being operated by Julie Martini-Caldwell and Michael Martini, both of whom are lifelong Woburn residents, Woburn High School graduates, and Bentley College graduates.

At the Martini Insurance Agency our personal lines department has experienced and knowledgeable customer service representatives to handle all of your personal insurance needs. In addition, you can rely on Martini Insurance for all of your business needs.

Whether your company is large or small, our professional representatives will work with you to put together a comprehensive commercial insurance program.

Our staff will sit down with you on a one-to-one basis to review your insurance program and make the necessary recommendations to your policies that will protect you in the future or in the event of a loss, at the most competitive prices in today's insurance market.

It is our goal to earn the privilege of being your insurance manager, handling not only your commercial needs but all of your personal insurance needs as well.

Please contact us for an insurance review.

## Massachusetts Veterinary Referral Hospital



20 Cabot Road  
Woburn, MA 01801  
781-932-5802  
info@IVGHospitals.com  
www.IVGHospitals.com

**HOURS OF OPERATION:**  
We are open 24 hours per day,  
365 days per year.



Massachusetts Veterinary Referral Hospital provides specialty veterinary care and 24-hour emergency/critical care to dogs and cats. While our medical team is equipped with advanced diagnostic and therapeutic tools, it is their training and human interaction with your pet that make all the difference.

Our experienced medical team is dedicated to a collaborative approach to your pet's care; we involve both you and your family

veterinarian in the diagnosis and treatment plan. We understand that your pet is a member of your family and we strive to exceed your expectations for their medical care.

**Veterinary specialties at Mass Vet include:** 24-hour Emergency & Critical Care, Clinical Pathology, a Compounding Pharmacy, Diagnostic Imaging, Internal Medicine, Neurology, Oncology, Ophthalmology, Physical Therapy & Rehabilitation, and Surgery.

## McLane Middleton



Trade Center 128  
300 Trade Center, Suite 7000  
Woburn, MA 01802  
781-904-2722  
www.mclane.com



Founded in 1919, McLane Middleton, P.A. is a full service, regional, New England-based law firm. With almost 100 attorneys, we provide comprehensive, interdisciplinary legal advice on a broad range of issues facing businesses today.

Our attorneys practice from offices in Woburn, Massachusetts, and Manchester, Concord, and Portsmouth, New Hampshire. From these locations, we are able to meet our clients' needs throughout New England. As a regional law firm, we have extensive experience as trial, regulatory, and corporate counsel in numerous jurisdictions. The firm's history of providing service to significant power, energy, and utility enterprises dates back

almost to the firm's inception, and a number of those early clients or their successors remain clients of the firm today.

The members of our firm are organized into six departments: Litigation, Administrative Law and Governmental Affairs, Corporate, Real Estate, Taxation, and Estate Planning. Departments are further divided into Practice Groups. McLane's Practice Groups combine the skills and experience of corporate, utility, regulatory, tax, employment, environmental, land use, intellectual property, litigation, and other attorneys in an interdisciplinary effort to best serve the needs of our clients.

## McLaughlin-Dello Russo Funeral Home



60 Pleasant Street  
Woburn, MA 01801  
781-396-0083  
www.dellorusso.net

### HOURS OF OPERATION:

We are always available in your time of need.

**DELLO RUSSO**  
FAMILY FUNERAL HOMES

Just as the loss of a single leaf affects the whole tree, an entire community feels a loss when a loved one dies. McLaughlin-Dello Russo Funeral Homes can help you, before, during, and after the loss of a loved one. We have expertise in all types of funeral services, both simple or more elaborate. It's up to your wishes.

McLaughlin-Dello Russo Family Funeral Homes recognizes that our community is comprised of diverse preferences of religion, philosophies, and beliefs. You will find our firm is responsive to your needs and wishes. By offering a wide range of services, each family has the ability to create a meaningful and

appropriate way to remember their loved one.

When a death occurs, there are certain criteria, mandated by law, which must be recognized, and requirements fulfilled as a routine matter. Beyond this, the coordination of services and disposition choices are determined by the family. The Dello Russo family will assist you and offer any guidance you may require.

Dello Russo Family Funeral Homes has three locations to serve you. We maintain our facilities with the utmost care to offer your family and friends a comfortable setting to gather at the loss of a loved one. Please call or visit for a personal inspection. We welcome you.

## Northern Bank



**NORTHERN BANK**  
*Neighbors you can bank on.*

303 Main Street  
215 Lexington Street  
89 Elm Street  
275 Mishawum Road  
Woburn, MA 01801  
800-273-6908  
www.nbtc.com

### HOURS OF OPERATION:

|           |                   |   |                    |
|-----------|-------------------|---|--------------------|
| Mon - Wed | 8:30 am - 4:30 pm | Sat   | 8:30 am - 12:00 pm |
| Thur      | 8:30 am - 7:00 pm | Sun   | Closed             |
| Fri       | 8:30 am - 6:00 pm | Drive-up Banking Opens at 7:30 am Mon - Fri |                    |



Northern Bank is guided by a unique entrepreneurial spirit and the ability to always be looking ahead. Our clients have come to expect bankers who are accessible and available, flexible and responsive. We like to bump up against the status quo by responding quickly to requests for financial support or guidance and producing a solution that other banks can't or are unable to think of. Over the past five years, we have achieved outstanding financial performance without compromising our commitment to the communities we serve. We have created an organization where employees enjoy working, and by doing what

is best over doing what is easy.

As we look ahead, we plan to provide additional services for our clients with complex business needs, and continue to offer the most advanced banking solutions for our personal and small business customers while monitoring the latest advancements in security, including biometrics. Most importantly, we will continue to create success for our bank, our clients, and our communities by working hard and making decisions based on common sense.

Member FDIC | Equal Housing Lender

*Proud* to Help Create Healthy Families in the Communities We Serve



## Celebrating 60 Years Serving the Greater Winchester Area

- Post-Acute Care & Rehabilitation
- Short & Long-Term Care
- Hospice



[SALTERHEALTHCARE.COM](http://SALTERHEALTHCARE.COM)

### Aberjona Rehabilitation & Nursing Center

184 Swanton Street  
Winchester, MA 01890  
(781) 729-9370

### Winchester Rehabilitation & Nursing Center

223 Swanton Street  
Winchester, MA 01890  
(781) 729-9595

### Woburn Rehabilitation & Nursing Center

18 Frances Street  
Woburn, MA 01801  
(781) 933-8175

## All New Best Western PLUS Woburn MA – Fully Renovated 2016



**NEW MEETING ROOMS FOR BANQUETS, MEETINGS, AND FUNCTIONS** - From 2-10 people board room meetings to dinners and social functions for 125, the Best Western has all new space with 11-foot-high ceilings with chandeliers and wall sconces, and open rooms for all occasions, including corporate meetings and exposition events. Please contact our sales team at 781-935-8160 or [bw.sales@jamsanhotels.com](mailto:bw.sales@jamsanhotels.com).

**NEW ON-SITE WAXY'S MODERN IRISH PUB AND RESTAURANT** - This one-of-a-kind pub is located at the Best Western with authentic millwork handcrafted in Ireland, shipped, and reassembled here. Waxy's is a very popular spot and serves up hearty Irish options like shepard's pie, but also has good American fare options as well. Grab a pint in the pub or enjoy in your guest room.

**NEW ROOMS WITH NEW BEDDING PACKAGE** - This year we are excited to have a new modern, classy upgrade with all new room décor and furnishing, including the new Best Western bedding package that includes 800-coil-count Serta pillowtop beds and 300-count sheets and covers for an exceptional night's sleep.

**NEW EXPANDED HOT CONTINENTAL BREAKFAST** - The Breakfast room has been expanded to allow for more seating and more options on the new breakfast buffet, including omelets and 2 choices of protein and waffle stations with fresh fruit toppings. Along with all the other options, these make choosing the Best Western a great value for leisure and business travelers alike.

## *Celebrating Over 50 Years*

*"Our Success Depends  
On Your Satisfaction"*

*"We can customize  
protection to handle all of  
your insurance needs"*

### **MARTINI INSURANCE AGENCY**



6 Common Street, Woburn

**781-935-0220**

[www.MartiniInsurance.com](http://www.MartiniInsurance.com)

**Auto • Home • Life • Umbrella • Business • Financial Planning**



**SCAFIDI JULIANO, LLP**  
— ATTORNEYS AT LAW —

## **James A. Juliano, Esq.**

Tel: 781.210.4710

Fax: 781.210.4711

[jjuliano@scafidijuliano.com](mailto:jjuliano@scafidijuliano.com)

[scafidijuliano.com](http://scafidijuliano.com)

Scafidi Juliano, LLP

5 Campbell Street

Woburn, MA 01801

- Residential and commercial real estate conveyancing and financing (Buyer, Seller, and Bank representation)
- Landlord/Tenant Law
- Zoning and Local Permitting/Licensing

## Patriot Community Bank

237 Lexington Street  
Woburn, MA 01801  
781-935-3318  
www.patriotcb.com



**HOURS OF OPERATION:**  
Mon - Wed, Fri 8:00 am - 5:00 pm  
Thur 8:00 am - 7:00 pm  
Sat 8:30 am - 12:00 pm  
Sun Closed



Patriot Community Bank is big enough to provide all the banking power you need, yet small enough to deliver the personal attention you deserve. Our professional and caring staff enjoys growing long-term relationships with our customers while providing the banking services they need.

At Patriot Community Bank we are involved in community events and believe that it is an important step to understanding the needs of the people who live and work there. We are dedicated to creating growth for businesses, therefore assisting economic stimulation in the communities we serve.

We offer a variety of personal and business checking and savings options as well as convenient services designed to meet your banking needs. Our loan programs, including SBA Loans, can assist businesses in growing and achieving their goals.

Whether for your personal or business needs, we make banking simple and convenient. Stop in or call Patriot Community Bank today at 781-935-3318 to learn more about the pleasure and ease of banking with us, a true community bank!

## Peterson Party Center



36 Cabot Road  
Woburn, MA 01801  
781-729-4000  
www.petersonpartycenter.com

**HOURS OF OPERATION:**  
Mon - Fri 8:30 am - 5:30 pm  
Sat 8:30 am - 5:00 pm  
Sun 9:00 am - 3:00 pm



PETERSON PARTY CENTER is New England's leading resource for tent and special event rentals. We constantly add to our vast inventory of impeccably maintained items, from tables, chairs, linen, china, and glassware, to cooking and meeting equipment. We especially pride ourselves on our tent inventory, which is the widest and most innovative in the Northeast and for which we can custom design floors and staging. We have established and trusted relationships with the area's most respected and talented caterers and event planners, corporations, production companies, and charities. We have earned a reputation for outstanding customer service and pride ourselves on assisting customers in creating successful and truly memorable events.

- 24-hour emergency customer assistance through main phone line

- Office staff, showroom, and delivery available seven days a week
- Full service showroom filled with inspirational design ideas
- Custom-sized linens and an extensive inventory to fit every budget and every event, large or small
- Event space layout and design services with PartyCAD computer program
- Professional, uniformed delivery, installation, and event supervision personnel who offer accurate and efficient service
- Fully computerized point-of-sale and order input system to ensure accuracy and order history archival
- Comprehensive website to assist in all aspects of planning
- Private conference rooms available to you and your clients

## RE/MAX Legacy



52 Pleasant Street  
Woburn, MA 01801  
781-938-7677  
[www.legacyma.com](http://www.legacyma.com)



RE/MAX Legacy has some of the most experienced agents in the area. Along with experience, RE/MAX Legacy is a local leader in marketing and technology. We are committed to providing you with the most positive real estate experience. RE/MAX Legacy's expert agents, cutting-edge tools, and outstanding resources ensure a smooth transaction from start to finish.

Our affiliation with RE/MAX makes

us part of the #1 real estate franchise in the world and provides our company and clients with global exposure. Nobody sells more real estate than RE/MAX!

RE/MAX Legacy is a full service real estate company that works with sellers and buyers, rentals, property management, and commercial real estate. Call us to discuss your real estate needs. Working together we can make our "legacy" grow!

## Residence Inn by Marriott Boston Woburn



300 Presidential Way  
Woburn, MA 01801  
781-376-4000  
[victoria.patterson@marriott.com](mailto:victoria.patterson@marriott.com)  
[www.marriott.com/boswo](http://www.marriott.com/boswo)

**HOURS OF OPERATION:**  
Open 24 hours a day.



Whether in the area for business travel, a vacation, a weekend getaway, or an extended stay, the Residence Inn Boston Woburn offers a comfortable, stylish retreat at a substantial value. Stretch your travel budget further and get more than just a room when you choose our all-suite hotel just 10 miles north of Boston, with easy access via highway or Commuter Rail.

Choose from studio, one, and two-bedroom suites, with room to be productive during the day and comfortable surroundings to relax and recharge in the evening. Each spacious suite features a

fully equipped kitchen with separate living, dining, and sleeping areas. Start your day with a complimentary full, hot breakfast buffet or an invigorating workout in the fitness center or indoor pool. Additional amenities include parking, wireless HSIA, Evening Mix, Grocery Shopping Service, and Hotel Shuttle within 5 miles. The hotel is non-smoking and pet friendly.

The hotel is also the perfect choice for your next offsite meeting or social event, offering flexible set-up for groups of five to 40 people, with a full range of menus and personalized service.

## S. B. Goddard & Son Co.



7 Winn Street  
Woburn, MA 01801  
781-933-0076  
goddardinsurance.com



S.B. GODDARD & SON CO.  
INSURANCE SINCE 1884

### HOURS OF OPERATION:

Mon - Fri 8:30 am - 4:30 pm, or by appointment.

### Contact Us

+ Online: Request a Quote  
+ Phone: 781-933-0076  
+ Fax: 781-932-0364

As an independent insurance agency, S. B. Goddard sells the insurance policies of a wide range of insurance companies. Your needs will be carefully reviewed, and then matched with the company offering the best protection at the most competitive premium.

Goddard Insurance, founded in 1884, is the oldest family-owned insurance agency in the area. Our experienced agents offer personal service, competitive rates, and customized programs.

We spend the time with you to offer:

- Expert review of your needs to find the insurance company offering the best rates and protection.
- In-depth local and regional knowledge.
- Ongoing review of a client's coverage.
- Courteous, professional service.

Our strength, stability, and knowledge allow us to provide you with quality insurance coverage and service you need and deserve.

## Scafidi Juliano, LLP



5 Campbell Street  
Woburn, MA 01801  
781-210-4710  
www.scafidijuliano.com

James A. Juliano, Esq.



SCAFIDI JULIANO, LLP  
ATTORNEYS AT LAW

Scafidi Juliano, LLP is a full-service law firm with offices in Woburn and Wellesley, Massachusetts. We focus on residential and commercial real estate conveyancing and financing, including representing buyers, sellers, and lenders. We also specialize in landlord/tenant law, condominium law, residential and commercial leasing, estate planning, and zoning and local permitting.

By concentrating our efforts in these areas, we believe the firm delivers focused and individual attention. We have a business-like approach to each situation and we always spend time thinking about ways to save our clients legal fees and costs.

Our firm culture is characterized by professionalism, teamwork, honesty, and a steadfast commitment in everything we do.

## Scheehan, Schiavoni, Jutras & Magliocchetti Attorneys



629 Main Street  
Woburn, MA 01801  
781-933-7756  
rjutras@ssjmattoorneys.com  
www.ssjmattoorneys.com



For over a hundred years, SSJM Attorneys have been the choice of clients in Massachusetts and New Hampshire. We provide exceptional client service while meeting the needs of individuals and businesses with legal excellence and superior results.

SSJM Attorneys continues a long and distinguished legal tradition of being the choice of clients for 101 years, being originally founded in 1914 as Tilton & Cogswell. Having grown into a full service law firm providing legal counsel throughout MA and NH, we are the choice of clients in the areas of Business Law, Estate Planning, Elder and Medicaid Law, Real Estate,

Divorce and Family Law, Probate Administration, Immigration, Bankruptcy, Criminal Law, and Personal Injury. Clients of SSJM Attorneys include individuals, businesses, banks, and corporations, which are local, regional, and national in scope. We hold our clients' goals and confidences as our highest priority. If you are a new or potential client, you can be assured of exceptional services and creative, cost-effective solutions to evaluate and resolve your legal concerns. If you are a previous or current client, we thank you for your confidence and look forward to our ongoing and future opportunities to assist you with all of your legal needs.

## Seaver Construction, Inc.



215 Lexington Street  
Woburn, MA 01801  
781-935-0130  
info@seaverconstruction.com  
www.seaverconstruction.com



At Seaver Construction, Inc., our goal is to offer quality products and reliable service at a competitive price. We can work with your architect or offer a design/build package to meet your needs.

Seaver Construction has been delivering both commercial and residential projects to its clients for the past 30 years. We are an award-winning company and a member of Better Business Bureau with an A+ rating. The professionals at Seaver Construction look forward to serving you on your next commercial or residential project.

### Commercial and Residential

Design/Build

New Homes

Additions

Renovations

Remodeling

Windows and Doors

Kitchens and Baths

## Skyworks Solutions, Inc.



20 Sylvan Road  
Woburn, MA 01801  
781-376-3000  
sales@skyworksinc.com  
www.skyworksinc.com



### Enabler of All Things Connected

As an innovator of high performance analog semiconductors, Skyworks is helping facilitate the transition to anytime, anywhere connectivity in some of the highest growth communications markets in the technology sector today.

Specifically, Skyworks is empowering connectivity across a number of strategic applications including medical devices, wearable technologies, home automation, and hybrid vehicles, as well as smartphones and tablets. As the enabler of all things connected, Skyworks is helping to link people, places, and things and improve the way the world communicates.

### About Skyworks

Skyworks Solutions, Inc. is an innovator of high performance analog semiconductors. Leveraging

core technologies, Skyworks supports automotive, broadband, wireless infrastructure, energy management, GPS, industrial, medical, military, wireless networking, and smartphone and tablet applications. The company's portfolio includes amplifiers, attenuators, circulators, demodulators, detectors, diodes, directional couplers, front-end modules, hybrids, infrastructure RF subsystems, isolators, lighting and display solutions, mixers, modulators, optocouplers, optoisolators, phase shifters, PLLs/synthesizers/VCOs, power dividers/combiners, power management devices, receivers, switches, and technical ceramics.

Headquartered in Woburn, Mass., Skyworks is worldwide with engineering, manufacturing, sales, and service facilities throughout Asia, Europe, and North America.

## Stanton & Co.



300 Wildwood Avenue  
Suite 250  
Woburn, MA 01801  
781-933-1744



At Stanton & Company, we have been helping our clients navigate tax regulations and accounting standards for over 20 years. Whether you are an individual, small and closely held business, condominium association, or a not-for-profit institution, we can help guide you. We offer these services:

- Audit & Review
- Tax Services
- Consulting
- Accounting & Bookkeeping

The firm's principal, Sondie B. Stanton, C.P.A., has over 25 years of experience in public accounting.

Call us at 781-933-1744 and ask us about our Woburn Business Association preferred pricing.

"Our goal is to be your trusted accounting firm and long-term consulting partner."

## Stirling Technologies



1 Mount Vernon Street  
Suite #302  
Winchester, MA 01890  
781-369-5154  
info@STBoston.com  
www.STBoston.com

**HOURS OF OPERATION:**  
Mon - Fri 10:00 am - 6:00 pm  
Sat, Sun Closed

**stirling**  
technologies

Are you a Woburn business, organization, or non-profit looking to establish your web presence? Look no further!

Stirling Technologies is a full service web design and development firm serving the Greater Boston area and located in nearby Winchester. We create custom websites and web applications, working with entrepreneurs, startups, nonprofits and small to medium-sized businesses to assist them with their brand identity and marketing efforts. We also partner with cities, towns, and schools to create engaging custom sites and apps.

Our passion for clean, modern web design and code integrity is what sets us apart from similar sized shops. We ensure that all our clients receive the highest level of service and strive to deliver the

best product imaginable. We work one-on-one with our clients to help them understand the possibilities and limitations of launching and managing a website so they are fully aware of what is truly possible by taking their business onto the modern web.

We also offer logo design, photography and video services, hand-tailored Internet marketing campaigns via search engines and social media, Google Adwords management, and ongoing website security. Call today to learn more about how to boost your business's web presence!

## TeamLogic IT



12 Tower Office Park  
Woburn, MA 01801  
781-791-3016  
ahackett@teamlogicit.com  
www.TeamLogicIT.com/woburn

**HOURS OF OPERATION:**  
Mon - Fri 8:30 am - 5:30 pm  
Sat, Sun By Appointment

**TeamLogic IT**<sup>®</sup>  
Your Technology Advisor

TeamLogic IT is the nation's leading provider of computer and network services for small and medium-size businesses.

We can help you plan, implement, maintain, and, when necessary, repair your computer network.

Whether it's harnessing the power of the latest technology—such as smart phones, tablets, or cloud computing—or assuring that your network and data are safe, secure, and protected, TeamLogic IT is there to help.

### PROACTIVE IT

Strategic evaluation and tactical planning tailored for you and your business

### PREVENTATIVE IT

Remote monitoring, anticipating problems before they occur, and preventing disruptions to your business

### RESPONSIVE IT

Local team of certified technicians on call for you

TeamLogic IT - Your Technology Advisor

## Waxy O'Connors Irish Pub



1 Rainin Road  
Woburn, MA 01801  
781-281-7290  
Woburn@waxyspubgroup.com  
www.waxys.com

**HOURS OF OPERATION:**

Open 7 Days a Week:  
Mon - Sat 11:00 am - 12:00 am  
Sun 12:00 pm - 12:00 am



Waxy O'Connor's Irish Bar and Restaurant is the premier venue for great food, local craft beer, and Irish hospitality in the Greater Boston area. Located just off Exit 36 on I-93 Waxy's is the perfect venue for any occasion. It's not just our fresh food, crafted cocktails, and beers, it's a great time and an experience to be shared with friends and family. We believe in hospitality and strive to make our home, your home. Boasting two

private dining rooms and several options for semi-private dining, Waxy's provides ample space for anything from an after-work gathering to a post-wedding celebration.

For more information about Waxy O'Connor's Woburn please call 781-281-7290, email woburn@waxyspubgroup.com, or visit waxys.com. We look forward to seeing you soon.

## Winchester Hospital



41 Highland Avenue  
Winchester, MA 01890  
781-729-9000  
www.winchesterhospital.org

**HOURS OF OPERATION:**

Open 24 hours/seven days a week.



**Winchester Hospital**  
A member of Lahey Health

Winchester Hospital, now a member of Lahey Health, has a long history of excellence marked by 100+ years of experience. Winchester Hospital is the first hospital in Mass. to earn Magnet recognition, the American Nurses Association's highest honor for nursing excellence, three times. As a leading provider of comprehensive health care services, our 229-bed facility provides care in general, bariatric, and vascular surgery, orthopedics, cardiology, pulmonary medicine, oncology, radiation oncology, gastroenterology, urology, gynecologic urology, rehabilitation, pain management, obstetrics/gynecology, pediatrics, and a Level IIB Special Care Nursery. Winchester Hospital has clinical affiliations with several nationally recognized hospitals in the region,

including Boston Children's Hospital, Tufts Medical Center, and Beth Israel Deaconess Medical Center.

Winchester Hospital has 20 clinical locations. In addition to the main campus at 41 Highland Ave. in Winchester, there is the Family Medical Center in Wilmington and Baldwin Park II in Woburn, each housing a walk-in urgent care center; Unicorn Park in Woburn, where the Center for Healthy Living, Imaging Center, and Breast Care Center are located; Riverside Associates in Medford, which houses our Wound Healing Center and diabetes and weight management programs; and our state-of-the-art Center for Cancer Care and Ambulatory Surgery Center located at 620 Washington St. in Winchester.

## Woburn Bowladrome



32 Montvale Avenue  
Woburn, MA 01801  
781-933-1709  
contact@woburnbowl.com  
www.woburnbowl.com

### HOURS OF OPERATION:

Mon - Wed, Fri, Sat 9:00 am - 11:00 pm  
Thur 12:30 pm - 11:00 pm  
Sun 12:30 pm - 10:00 pm  
Doors are locked 1 hour before closing.



Woburn Bowladrome, Inc. has been providing quality service to the community since our founding in 1940. Woburn Bowladrome was established on April 6th, 1940 from an old garage on Montvale Avenue.

Originally the alleys consisted of eight lanes with a pin boy setting up each rack of ten pins. Now the alleys are 40 lanes with fully automatic pin setters and automatic scoring.

Candlepin House - 40 Lanes  
Automatic Scoring - Video & Game Room  
Lottery & Keno - Snack Bar - Beer & Wine  
Birthday Parties - Corporate Events  
Glow Bowling - Bumper Bowling  
Learn more at [www.woburnbowl.com](http://www.woburnbowl.com).

## Woburn Business Association



10 Tower Office Park #416  
Woburn, MA 01801  
781-935-0345  
[www.woburnbusiness.org](http://www.woburnbusiness.org)



The Woburn Business Association is a non-profit organization focusing exclusively on improving and promoting the local business climate in Woburn by helping businesses work productively with each other, with local government, and with the residential community.

The Board of Directors meets monthly to develop policy and provide guidance while an Executive Director and Administrative Assistant provide day-to-day accessibility and continuity. Standing committees include the Marketing and Planning Committee, the Government Relations Committee, the Community Relations Committee, and the Program Committee.

The WBA also holds many networking events throughout the year, including breakfast seminars, informal receptions, dinner meetings, and social

gatherings, as a great way for new people and businesses to meet each other. We encourage any business that offers a service or product to the City of Woburn to join us even if you do not live in or have an office in the city.

The more businesses that are part of the association, the more can be accomplished—not only for local commerce but for the City as a whole. The WBA sends its members a newsletter which keeps them in tune with state and local legislation, provides information and updates vital to the business community, monitors the Downtown Revitalization program, and features a Company of the Month profile. All members are also included in this Local Business Guide that was mailed to every home in Woburn in March of this year.

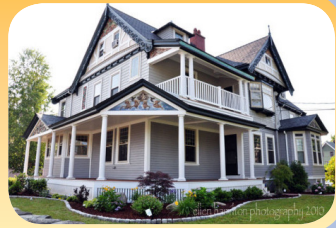
## Woburn Historical Society



7 Mishawum Road  
Woburn, MA 01801  
781-287-0620

### HOURS OF OPERATION:

Mon, Wed, Sat 10:00 am - 12:00 pm



The Woburn Historical Society is made up of community volunteers and strives to preserve and promote Woburn's rich history through various programs and events. Founded in 2006, the society has grown by leaps and bounds and usually there are anywhere from 300 to 600 people at the monthly presentations. We make history fun and educational and strive to promote civic pride in Woburn's rich history.

Check our updated website for the kick-off of the 2016 year of programming. Exciting presentations are coming this spring including

a commemoration of the 50th anniversary of the Vietnam War in March, the US Navy Band concert in April and guest speaker Tom Tudor in May, former guard at the Tomb of the Unknown Soldier and guide at the Arlington National Cemetery. [www.woburnhistoricalsociety.com](http://www.woburnhistoricalsociety.com)

We are always happy to find new volunteers. Do you want to support us by helping with our work? Then Do not hesitate to contact us. A helping hand is always greatly appreciated!

## Woburn Municipal Federal Credit Union



8 Cedar Street  
Woburn, MA 01801  
781-933-2600  
[www.woburnmunicipalfcu.org](http://www.woburnmunicipalfcu.org)

### HOURS OF OPERATION:

Mon - Wed, Fri 9:00 am - 4:00 pm  
Thur 9:00 am - 6:00 pm  
Sat, Sun Closed



Woburn Municipal Federal Credit Union is uniquely different from a bank, finance company, Savings & Loan, or Thrift. Once you join us, you'll be immediately eligible for our low- or no-fee financial services, lower interest rates for loans, and higher yield investment and savings accounts, plus outstanding member services and the attention you deserve.

Joining is easy. If you are eligible, just open a Share Account which represents your "share" in the credit union. Your \$25.00 deposit in this account begins your lifetime of credit union benefits.

Woburn Municipal Federal Credit Union is a unique, not-for-profit, member-owned financial institution. We are chartered by the federal

government and regulated by the National Credit Union Administration (NCUA). Member deposits are federally insured by the National Credit Union Share Insurance Fund (NCUSIF).

Unlike banks that are driven to provide a profit for shareholders, your credit union returns excess earnings to our members. We do this by providing friendly and personal service, lower interest rates for loans, higher yields on savings and investment accounts, and by adding new financial products and services.

We welcome you and your family to the Woburn Municipal Federal Credit Union.

-Board of Directors

## Woburn Nursing Center (Salter Healthcare)



18 Frances Street  
P.O. Box 272  
Woburn, MA 01801  
781-933-8175  
www.salterhealthcare.com



"The First Choice in Health Care"

Founded in 1956, Salter HealthCare is a family owned and operated health care provider with a reputation for excellence in the health care community.

With three post-acute, rehabilitation, and skilled nursing centers located in Winchester and Woburn, Salter HealthCare offers specialized rehabilitation programs, post acute short-term care, subacute care, Alzheimer's and Dementia care, long-term care, skilled nursing, and hospice care, as well as respite services.

To make a referral to one of our 5-STAR-RATED nursing centers, please call 781-729-2200.

WOBURN ~ ABERJONA ~ WINCHESTER

Rehabilitation and Nursing Centers

See our ad on page 24

## Woburn Toyota



394 Washington Street  
Woburn, MA 01801  
781-933-1100  
www.woburntoyota.com



### SALES HOURS

Mon - Thur 9:00 am - 9:00 pm  
Fri - Sat 9:00 am - 6:00 pm  
Sun Noon - 5:00 pm  
CONTACT: 877-835-7806

Woburn Toyota, a division of Woburn Foreign Motors, has been serving the automotive needs of the greater Woburn community for nearly 40 years.

Founded in 1977 by George Albrecht, Sr., Woburn Foreign Motors has always been based on a Customer for Life philosophy which has helped the business grow. The greater company, now known as Albrecht Auto Group, includes several other dealerships in the Boston area, including Marlboro Nissan, Infiniti of Norwood, Woburn Jaguar, Woburn Scion, and Milford Nissan, as well as Woburn Foreign Auto Body.

Mr. Albrecht continues to have an active role in the organization which is now headed by his son, George Albrecht, Jr. Albrecht Auto retails over 550 vehicles and services thousands more each month. Additionally, the Albrecht family believes in participating in and giving back to the communities in which they operate. They have served and continue to serve on the boards of numerous charities and foundations and regularly contribute to local causes.

See our ad on back cover

## WOBURN BUSINESS ASSOCIATION DIRECTORY

Unless indicated otherwise, all towns are Woburn, MA 01801

### ACCOUNTANTS

**Lennon Insurance Agency Inc.**  
629 Main Street  
781-937-0050

**Jamieson Management Co., Inc.** Scafidì Juliano, LLP  
627 Main Street, Ste 1  
(see pgs. 25,28)

781-933-5783

5 Campbell Street  
781-210-4710

www.scafidijuliano.com

### APPLIANCES

**Resource Horizons Group, LLC**  
10 Tower Office Park, #513  
781-933-8783

**Boston Appliance** (see pgs. 3,17)  
60 Cummings Park  
781-935-2700  
www.bostonappliance.net  
facebook.com/BostonApplianceCo

**Scheehan, Schiavoni, Jutras & Magliocchetti Attorneys**  
(see pg. 29)  
629 Main Street  
781-933-7756  
www.ssjmattorneys.com

**Richard L. Black Inc.**  
(see pg. 42)  
162 Salem Street  
781-935-8129

### ATTORNEYS

**Stanton & Co.** (see pg. 30)  
300 Wildwood Avenue  
Suite 250  
781-933-1744

**Culik Law PC**  
18 Commerce Way, Ste 2850  
617-830-1795

### AUTO DEALERS

**Lannan Chevrolet Oldsmobile Inc.**  
40 Winn Street  
781-935-2000

### ADVERTISING / DESIGN

**Stirling Technologies**  
(see pg. 31)  
1 Mount Vernon Street  
Suite #302  
Winchester, MA 01890  
781-369-5154  
www.STBoston.com

**McLane Middleton**  
(see pg. 22)  
Trade Center 128  
300 Trade Center, Suite 7000  
Woburn, MA 01802  
781-904-2722  
www.mclane.com

**Lawless Chrysler Jeep Inc.**  
(see pg. 44)  
196 Lexington Street  
781-935-2212

**R.C. Olsen Cadillac, Inc.**  
781-935-7000

### APARTMENT / RENTALS / FURNISHED

**Glenbrook Estates**  
200 Bedford Road  
781-933-0816

**Murtha Cullina LLP**  
600 Unicorn Park Drive  
2nd Floor  
781-933-5505

**Woburn Toyota**  
(see pgs. 35,48)  
394 Washington Street  
781-933-1100  
www.woburntoyota.com

**Riemer & Braunstein**  
Seven New England  
Executive Park  
Burlington, MA 01803  
617-880-3404

# Dole & Bailey, Inc.

Woburn MA

800.777.2648

www.DoleandBailey.com

www.NortheastFamilyFarms.com

www.NortheastOceans.com



## Northeast Family Farms

Authentic Artisan Foods

Where Great Chefs Go to Connect  
with Great Local Farms

## WOBURN BUSINESS ASSOCIATION DIRECTORY

Unless indicated otherwise, all towns are Woburn, MA 01801

### AUTO SERVICE STATIONS / FUEL / MINI MARTS

#### AL Prime Energy - J&R Service

18 Lark Avenue  
Saugus, MA 01906  
781-246-0201

#### Woburn Square Mobil

23 Pleasant Street  
781-933-9816

### AUTO SERVICES

#### J.N. Phillips Auto Glass

11 Wheeling Avenue  
781-939-3400

#### Mahoney's Auto Body

293 Salem Street  
781-933-5350

#### Murray's Towing (see pg. 13)

89 Winn Street  
781-935-1439

#### Palmer Spring Company

7 Walnut Hill Park  
781-376-0130

#### Riverside Car Care Inc.

293 Montvale Avenue  
781-938-1111

#### Town Fair Tire

422 Washington Street  
781-935-1375

#### Woburn Brake & Alignment Co.

100 Winn Street  
781-933-9844

#### Woburn Truck and Auto Inc.

1095R Main Street  
781-933-1546

### BAKERY / COFFEE SERVICE

#### Dunkin Donuts (A.J.P Donuts, Inc.)

75 Main Street  
781-789-1518

#### Dunkin Donuts (RVN Inc.)

409 Main Street  
617-491-8050

#### Dunkin Donuts - Winn St.

28 Winn Street  
781-273-6255

#### Dunkin Donuts c/o Jatón Management Co.

344 Washington Street

#### Something Sweet

#### Without Wheat

19 6th Road  
781-281-2003  
somethingsweetwithoutwheat.com

### BANKS

#### Century Bank

299 Mishawum Road

#### Northern Bank (see pgs. 2,23)

303 Main Street  
215 Lexington Street  
89 Elm Street  
275 Mishawum Road  
800-273-6908  
www.nbtc.com

#### Patriot Community Bank

(see pgs. 5,26)  
237 Lexington Street  
781-935-3318  
www.patriotcb.com

#### Peoples' United Bank (see pg. 13)

400 W. Cumming Park  
781-938-5567

#### Reading Cooperative Bank

300 Trade Center, Ste 1740  
781-942-4281

#### Salem Five Bank (see pg. 5)

443 Main Street  
978-720-5614

#### Woburn Municipal Federal Credit Union (see pg. 34)

8 Cedar Street  
781-933-2600  
www.woburnmunicipalfcu.org

# The Sign you want.

The Agent you need.



## WOBURN BUSINESS ASSOCIATION DIRECTORY

Unless indicated otherwise, all towns are Woburn, MA 01801

### BANQUET HALLS

#### Crest View Plaza

36 Montvale Avenue  
781-935-4994

### BATTERIES

#### Batteries Plus Bulbs

(see pg. 16)

173A Cambridge Road  
781-933-9093  
www.batteriesplus.com

### BIOTECHNOLOGY

#### ABPRO Corp.

65 Cummings Park Drive  
800-396-5890  
www.abpro-labs.com

### BOWLING

#### Woburn Bowladrome

(see pg. 33)

32 Montvale Avenue  
781-933-1709  
www.woburnbowl.com

### BUILDING MATERIALS

#### Albert Fitzgerald Inc.

P.O. Box 2128  
Woburn, MA 01888  
781-935-7821

#### Ambius

27 Draper Street, Suite D  
781-376-0970  
www.ambius.com

#### Kamco Supply Corp. of Boston

(see pg. 39)  
P.O. Box 2489  
781-938-0909

#### Whit Builder and Supply Inc.

30 Sonar Drive  
781-937-3909

### BUSINESS CONSULTANTS

#### Heart Healthy Scrum

45 Hammond Place  
617-575-9707  
www.hearthealthyhuman.com

#### Image Tech - Xerox

100 Burt Road, Suite 228  
Andover, MA 01810  
508-331-1719

### CAR WASH

#### Scrubadub Auto Wash Centers

172 Worcester Road  
Framingham, MA 01701  
781-932-7887

### CHEMICAL WHOLESALE DISTRIBUTOR

#### New England Resins & Pigments

316 New Boston Street  
781-935-8910

### CHEMISTRY SERVICE TO PHARMACEUTICAL INDUSTRY

#### Organix, Inc.

240 Salem Street  
781-932-4142

### CLEANERS

#### ACP Cleaning Inc.

(see pgs. 7,15)  
300 Trade Center Park  
Suite 5400  
Woburn, MA 01888  
781-932-0500  
www.acpcleaning.com

#### Champion Cleaners

84 Washington Street  
781-935-0035

#### Service Master Clean

100 B Maple Street  
Stoneham, MA 02180  
781-438-6033

**Little Folks**  
**Day School**  
781-935-9697



600 West Cummings Park  
Woburn, MA 01801  
www.littlefolksdayschool.com

Celebrating our 33rd anniversary in 2015!  
Full Day and Part Time Preschool and  
Pre-Kindergarten Programs

## WOBURN BUSINESS ASSOCIATION DIRECTORY

Unless indicated otherwise, all towns are Woburn, MA 01801

### CLEANING / SMOKE & FIRE RESTORATION

**Serv Pro of Burlington/Woburn**  
38 High Street  
Suite 4  
781-939-6990

### CLUBS

**Woburn Moose Family Center**  
4 Federal Street  
781-933-1143

### COMMUNITY RESOURCES/ NON-PROFITS

**James McKeown Boys &  
Girls Club of Woburn**  
Charles Gardner Lane  
781-935-3777  
www.bgcwoburn.org

**Woburn Business Association**  
(see pg. 33)  
10 Tower Office Park, #416  
781-935-0345  
www.woburnbusiness.org

**Woburn Historical Society**  
(see pg. 34)  
7 Mishawum Road  
781-287-0620

### COMPUTERS / SALES, REPAIRS & SERVICE

**Micros Northeast, Inc.**  
329 Washington Street  
781-935-1456

### CONDOMINIUMS

**Place Lane Condominium Trust**  
10 Place Lane  
781-933-3230

### CONSTRUCTION/DEVELOPERS

**L.J. Herzog Construction &  
Development, Inc.**  
(see pg. 9)  
38 High Street, Unit 1

**Larry Levine Business  
Development**  
7511 Porto Vecchio Place  
Delray Beach, FL 33446  
561-498-9091

**Maggiore Construction**  
13 Wheeling Avenue  
781-935-9622

**Michienzi Construction &  
Development Inc.**  
11 Sixth Road, Ste 5  
781-935-8806

**Tocci Building Corporation**  
660 Main Street  
781-935-5500

### CONTRACTORS & CONSTRUCTION

**A. Cierri & Sons Inc.**  
19 Thornton Street  
781-935-3696

**Boston Welding & Design**  
7 Micro Drive  
781-932-0035

**Derro Construction Corp.**  
34A Holton Street  
781-491-0848  
www.derroconstruction.com

**Domenic Sicari Associates, LTD**  
623 Main Street, Ste 27  
781-933-1636

**Execuspace Construction Corp.**  
140 Garfield Avenue  
781-938-9099

**George W. Gately**  
23 Fairway Drive  
781-938-1415

**Litchfield Co. Inc.**  
83 Cambridge Street, Suite 2D  
Burlington, MA 01803  
781-270-6859



### COMMERCIAL BUILDING PRODUCTS

#### "The Contractor's Choice"

- Ceiling Systems
- Drywall & Framing
- Doors & Hardware
- Lumber
- Insulation & Weatherization
- Exteriors (EIFS)
- Tools & Fasteners
- Wall & Impact Protection

Serving All of New England

MAIN OFFICE:  
**Woburn, MA**  
(781) 938-0909

**Avon, MA**  
(781) 938-0909  
**Shrewsbury, MA**  
(781) 938-0909  
**Londonderry, NH**  
(781) 938-0909

**Lebanon, ME**  
(781) 938-0909  
**Portland, ME**  
(781) 938-0909  
**Williston, VT**  
(781) 938-0909

Visit us at: [www.kamcoboston.com](http://www.kamcoboston.com)

## WOBURN BUSINESS ASSOCIATION DIRECTORY

Unless indicated otherwise, all towns are Woburn, MA 01801

### Seaver Construction, Inc.

(see pg. 29)

215 Lexington Street

781-935-0130

www.seaverconstruction.com

### COPIERS / SALES & SERVICE

#### Copy Pro

46 Fowle Street

781-935-7555

#### New England Copy Specialists

39 6th Road

P.O. Box 4024

781-935-4340

### DEMOLITION / DRILLING / BLASTING

#### USA Demolition Inc.

98 Winn Street

781-376-0580

### DENTISTS

#### Coakley & Trainor DDS PC

90 Pleasant Street

781-935-8810

### DEPARTMENT STORES / DISTRIBUTION CENTER

#### Marshalls

83 Commerce Way

508-390-4710

### DISPOSAL & CONTAINER SERVICES

#### 1-800-Got-Junk (see pg. 11)

5 Walnut Hill Park, Unit 1

978-361-6179

#### Waste Management of Massachusetts Inc.

204 Merrimac Street

781-939-1250

### EDUCATION / SCHOOLS

#### Little Folks Day School

(see pgs. 20,38)

600 West Cummings Park

Suite 1075

781-935-9697

www.littlefolksdayschool.com

### ELECTRICAL CONTRACTOR

#### Fagan Electrical Service Inc.

P. O. Box 546

781-933-7388

www.faganelectricalservice.com

### ELECTRONIC MANUFACTURER

#### Skyworks Solutions, Inc.

(see pgs. 30,47)

20 Sylvan Road

781-376-3000

www.skyworksinc.com

### ENGINEERS / SURVEYORS - CIVIL

#### Allen & Major Associates Inc.

P.O. Box 2118

Woburn, MA 01888

781-935-6889

### ESTATE APPRAISAL

#### David I Gilgun and Co

623 Main Street

781-935-3000

### FABRICATION / CRYOGENIC EQUIPMENT

#### Vacuum Barrier Corp

P.O. 529

781-933-3570

### ELECTRICAL CONTRACTOR FARM STAND / GARDEN CENTER

#### Mahoney's Rocky Ledge Farm

(see pg. 21)

242 Cambridge Street

Winchester, MA 01890

781-729-5900

www.mahoneysgarden.com

#### Russell Farm

479 Washington Street



888 Main Street - Woburn, MA 01801

(781) 933-2670 (800) 386-7673

www.hillsideflorist.biz



## WOBURN BUSINESS ASSOCIATION DIRECTORY

Unless indicated otherwise, all towns are Woburn, MA 01801

### FINANCIAL SERVICES

#### Edward Jones

304 Cambridge Road, Suite 101  
781-935-0787

#### High Cap Financial

10 Playstead Avenue  
617-504-6966

#### Moriarty Financial Group, LLC

10 NE Business Center Drive  
Ste 205  
Andover, MA 01810  
978-681-4313

### FITNESS

#### Athletic Evolution (see pg. 14)

78C Olympia Avenue  
781-935-7701

#### Dance Studio 665

17 Campbell Street  
781-932-6235

#### North Suburban Family YMCA

137 Lexington Street  
617-927-8045

### FLORISTS / GIFT CENTERS

#### Hillside Florist (see pg. 40)

888 Main Street  
781-933-2636

### FOOD SERVICE DISTRIBUTORS

#### Dole and Bailey Inc. (see pg. 36)

16 Conn Street  
P.O. Box 2405  
781-935-1234

### FUNERAL SERVICES

#### Lynch-Cantillon Funeral Home

263 Main Street  
781-933-0400

#### McLaughlin-Dello Russo Funeral Home

(see pgs. 12,23)  
60 Pleasant Street  
781-396-0083  
www.dellorusso.net

### GELATIN MANUFACTURERS

#### Kraft Foods Atlantic Gelatin

P.O. BOX 795093  
San Antonio, TX 78279  
781-938-2204

### GLASS - AUTO-HOME- BUSINESS

#### Woburn Glass

243 Main Street

### HEATING CONTRACTORS / FUEL & BURNER SERVICES

#### Anderson Oil Service Inc.

6 Walnut Hill Park  
781-933-2530

#### K&N Oil Service

636 Main Street  
781-933-2452

### HOSPITALS / HEALTHCARE / SUPPORTIVE LIVING

#### ProEx Physical Therapy

300 Trade Center, Ste 1650  
781-935-2655

#### Woburn Nursing Center (Salter Healthcare) (see pgs. 24,35)

18 Frances Street  
P.O. Box 272  
781-933-8175  
www.salterhealthcare.com

### HOTELS / INNS

#### BEST WESTERN PLUS

#### New Englander (see pg. 16)

1 Rainin Road  
781-935-8160  
www.bestwestern.com

#### Comfort Inn (see pg. 13)

14 Hill Street  
781-933-5363



2 Merrimac Street  
Woburn, MA 01801  
781-935-6495  
www.socialconcern.org

Council of Social Concern assists over 2,200 individuals per year from Woburn, Winchester, & other communities in Middlesex County with the support of approximately 250 volunteers.

#### PROGRAMS INCLUDE:

The Children's Center, Family Childcare System, Family Skill Building - Parenting Education, Family Skill Building - Supervised Visitation, and the Food Pantry Program.

Food Pantry by appointment. Appointments may be made by calling 781-935-6495.

## WOBURN BUSINESS ASSOCIATION DIRECTORY

Unless indicated otherwise, all towns are Woburn, MA 01801

### Courtyard- Marriott

240 Mishawum Road  
781-932-3200

### Crowne Plaza Boston/Woburn

(see pg. 19)

15 Middlesex Canal Park Road  
781-935-8760  
www.hotelbostonwoburn.com

### Fairfield Inn

285 Mishawum Road  
781-938-7575

### Hampton Inn

315 Mishawum Road  
781-935-7666

### Holiday Inn Express (see pg. 3)

315 Mishawum Road  
781-935-7666

### Residence Inn by Marriott Boston Woburn

(see pg. 27)

300 Presidential Way  
781-376-4000  
www.marriott.com/boswo

### HUMAN / SOCIAL SERVICES

#### Council of Social Concern

(see pgs. 18,41)

2 Merrimac Street  
781-935-6495  
www.socialconcern.org

### Supportive Living, Inc.

400 W. Cummings Park  
Suite 1600  
781-937-3199

### INFORMATION

#### TECHNOLOGY SERVICES

#### TeamLogic IT (see pg. 31)

12 Tower Office Park  
781-791-3016  
www.TeamLogicIT.com/woburn

### INSURANCE

#### Martini Insurance Agency Inc.

(see pgs. 21,25)

6 Common Street  
781-935-0220  
www.martiniinsurance.com

#### Salem Five/Boyle Insurance

Agency Inc.  
(see pg. 46)  
445 Main Street  
781-933-3100

#### S. B. Goddard & Son Co.

(see pg. 28)  
7 Winn Street  
P.O. Box 207  
781-933-0076  
goddardinsurance.com

### USI Insurance Services LLC

12 Gill Street, Ste 5500  
617-538-8695

### INTERNATIONAL

#### SALES & MARKETING

#### Mascon Inc.

5 Commonwealth Avenue  
781-938-5800

### JEWELRY /

#### SILVER CARE

#### Connoisseurs Products Corp

17 Presidential Drive  
781-932-3949

### LANDSCAPING /

#### MASONRY WORK / SUPPLIES

#### Gerrior Masonry & Landscape Construction

245 Salem Street  
781-933-4157

#### Landscape Express Inc.

218 New Boston Street  
781-933-3818

#### M.P.M. Services

1 Brandt Drive  
781-718-8661



## RICHARD L. BLACK PLUMBING, INC.

REPAIR • INSTALLATION • REMODELING  
RESIDENTIAL & COMMERCIAL  
WWW.RICHARDBLACKPLUMBING.COM

24-HOUR EMERGENCY SERVICE

781-935-8129



### PLUMBING & HEATING

Water Filter  
Water Heaters  
Pipe Thawing  
Garbage Disposals  
Drain Cleaning

### HIGH EFFICIENCY HEATING SYSTEMS

Gas & Oil, Hot Water, Steam, Hot Air

### CUSTOM KITCHEN & BATH REMODELING

Granite - Corian (R) - Engineered Stone - Laminate

### STOVES, BBQ GRILLS, FIREPLACES, ETC.



### RICHARD L. BLACK

Third Generation  
Since 1930  
Fully Insured  
Master Plumbing  
License #8801



## WOBURN BUSINESS ASSOCIATION DIRECTORY

Unless indicated otherwise, all towns are Woburn, MA 01801

### U.S. Pavement Services

39 Industrial Parkway  
781-932-4722  
www.uspavement.com

### Woburn Concrete &

Masonry Supply  
237 Salem Street  
781-933-4700

### LIQUOR STORES

#### Colonial Package Store, Inc.

3 Russell Street  
781-935-2322

#### North Woburn Package Store, Inc.

2 Elm Street  
617-927-8045

### LOCKSMITHS

#### Locks & Keys of Woburn Inc.

(see pg. 12)  
296 Mishawum Road  
781-933-9999

#### P & M Locksmith Services Inc.

(see pg. 45)  
463 Main Street  
781-935-6850

### LUMBER MATERIALS / HARDWARE

#### Barker Lumber Co., Inc.

(see pg. 15)  
10 Jefferson Avenue  
781-933-0057  
www.barkerlumber.com

### MAILING EQUIPMENT

#### De Bourke Company

28 Teal Road  
Wakefield, MA 01880  
781-245-1333

### MANUFACTURER

#### Custom Machine Inc.

30 Nashua Street

### MEDICAL / PHYSICAL THERAPY

#### Advantage Sports Medicine & Physical Therapy

245 North Street  
Stoneham, MA 02180  
781-438-7221

#### Elements Massage of Woburn

446 Main Street  
978-337-9487  
www.elementsmassage.com/woburn

### Fitzgerald Physical Therapy Associates (see pgs. 14,20)

500 West Cummings Park  
Suite 2100  
781-305-4656  
www.fitzgeraldpt.com

### Lifeline Ambulance Service

6A Gill Street  
781-935-2220

### Nupath

147 New Boston Street  
781-935-7057

### PACKING SUPPLIES / MOVING - SHIPPING

#### Personal Movers

100A Glenn Street  
Lawrence, MA 01843  
800-446-1129

### PAINT & HARDWARE

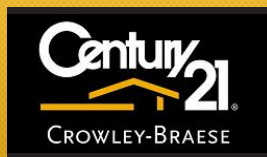
#### Colorworks Paint & Ace Hardware, Inc.

65 Winn Street  
781-933-2021  
www.colorworkspaintstores.com

### PAYROLL SERVICES

#### PrimePay

18 Commerce Way  
781-933-7610



Stephen R. Braese, Broker/Owner  
781-933-0005 sbraese@braese.com  
132 Pleasant Street, Woburn, MA

WWW.C21CROWLEY.COM

## WOBURN BUSINESS ASSOCIATION DIRECTORY

Unless indicated otherwise, all towns are Woburn, MA 01801

### PLASTIC THERMOFORMING & ROTO MOLDING

**Gregstrom Corporation**  
64 Holton Street  
781-935-6600

### PLUMBING / DRAIN & SEWER CLEANING

**All Owners Drain Cleaning, Inc.**  
943 Main Street  
Wilmington, MA 01887  
978-658-8970

**Drains by James Inc.**  
165 New Boston Street  
Suite #272  
781-933-4304  
www.drainsbyjames.com

**John's Sewer and Pipe Cleaners**  
4 Breed Avenue  
781-569-6695

### PLUMBING / HEATING / HVAC

**Paul J Dionne Co Inc.**  
72 Jonspin Road  
Wilmington, MA 01887  
978-657-3990  
www.pjdionne.com

### PRINTING / GRAPHICS / PROMOTIONAL PRODUCTS

**Boyd's Direct** (see pg. 17)  
100B Maple Street  
Stoneham, MA 02180  
781-438-4003  
www.boydsdirect.com

**Hartmere Associates**  
7 Ingalls Street  
781-933-7246

### REAL ESTATE / COMMERCIAL, RENTAL, BROKERAGE, MANAGEMENT

**Carbone Commercial R.E., Inc.**  
5 Stone Edge Lane  
781-935-5444  
www.CarboneRE.com

**Collins Management Inc.**  
10 Converse Place  
Winchester, MA 01890  
781-729-0707

**Gravestart Inc.**  
160 Second Street  
Cambridge, MA 02142  
617-492-4118  
www.gravestart.com

**Howland Development Co.**  
155 West Street  
Reading, MA 01867  
978-657-6400

**RE/MAX Legacy** (see pgs.  
27,37)  
52 Pleasant Street  
781-938-7677  
www.legacyma.com

### REAL ESTATE DEVELOPMENT / RESIDENTIAL & COMMERCIAL

**Ashford Corp**  
900 Lynnfield Street  
Lynnfield, MA 01940  
978-809-7573

**Century 21**  
(see pg. 43)  
132 Pleasant Street  
781-933-0005

**Compass Realty Associates, LLC**  
300 Trade Center, Ste 7700  
781-935-4500

**Cranes Court Ind. Park LLC**  
22 Cranes Court  
617-304-3233

# LAWLESS, INC.



Jeep

DODGE



RAM



VISIT US AT LAWLESS.COM

196 LEXINGTON STREET, WOBURN, MA 01801

## WOBURN BUSINESS ASSOCIATION DIRECTORY

Unless indicated otherwise, all towns are Woburn, MA 01801

### Cummings Properties LLC

200 West Cummings Park  
781-935-8000

### Draper Realty LLC

1150 Main Street #1  
Concord, MA 01742  
978-287-1414

### J. Mulkerin Realty

616 Main Street  
781-933-7200

### National Development of N.E.

120 Presidential Way, Suite 305  
617-527-9800

### North Shore Construction & Development

215 Salem Street  
781-932-1776

### The Begley Companies

185 New Boston Street  
781-935-9000

### RENTAL EQUIPMENT

#### E-Z Way Centers

108 Radcliffe Road  
Belmont, MA 02478  
617-489-2509

### Peterson Party Center

(see pg. 26)  
36 Cabot Road  
781-729-4000  
www.petersonpartycenter.com

### RESTAURANTS

#### Boston Restaurant Associates

48 Cummings Park  
781-938-1900

#### Cafe Escadrille

(see pg. 18)  
26 Cambridge Street  
Burlington, MA 01803  
781-273-1916  
www.CafeEscadrille.com

#### Dave and Buster's

(see pg. 19)  
271 Mishawum Road  
781-519-7900  
www.daveandbusters.com

#### Fresh City

345 Washington Street  
781-932-1120

#### Joe's American Bar and Grill

311 Mishawum Road  
781-935-7200

### Lisa's Family Pizzeria

(see pg. 2)  
903A Main Street  
781-938-0123

### Masa Restaurant

348A Cambridge Road  
781-938-8886

### Taste of Brazil

414 Main Street  
781-938-0101

### The Great Mandarin Restaurant

186 Cambridge Road  
781-937-3911

### The Restaurant

487 Main Street

### Waxy O'Connors Irish Pub (see

pgs. 3,24,32)  
1 Rainin Road  
781-281-7290  
www.waxys.com

### Wuburger (see pg. 2)

880 Main Street  
781-281-0277  
www.wuburger.com

### STORAGE

#### Stor U Self

25 Conn Street  
781-938-7757



P & M LOCKSMITH  
SERVICE, INC.



Family Owned for 40 years

Established in 1977

**781-935-6850**

463 Main Street - Woburn

www.pmlockinc.com

Remember the name P&M LOCKSMITHS for everything in Professional Locksmithing.

From simple duplicate keys to complicated installations and repairs, depend on us for the FASTEST AND FINEST SERVICE IN THE AREA.

*If it Locks, we will work on it.*

## WOBURN BUSINESS ASSOCIATION DIRECTORY

Unless indicated otherwise, all towns are Woburn, MA 01801

### TELECOMMUNICATIONS

#### American Tower Corporation

10 Presidential Way  
781-926-4500  
[www.americantower.com/corporateus](http://www.americantower.com/corporateus)

### THEATERS

#### Showcase Cinemas

25 Middlesex Canal Park Road  
781-933-5138

### THERMAL PRODUCTS

#### Lytron, Inc.

55 Dragon Court  
781-933-7300

### TRANSPORTATION / AIRPORT / BUS SERVICE

#### M & L Transit Systems Inc.

60 Olympia Avenue  
781-938-8646

### VETERINARIANS

#### Massachusetts Veterinary

#### Referral Hospital *(see pgs. 9,22)*

20 Cabot Road  
781-932-5802  
[www.IVGHospitals.com](http://www.IVGHospitals.com)

### WAREHOUSING

#### Tighe Warehousing & Distribution Inc.

481 Wildwood Avenue  
781-939-0925

### WINDOW CLEANING AND FILM / OFFICES, HOMES & CARS

#### Madico, Inc.

64 Industrial Parkway  
781-756-4161

### WOOD PRODUCTS

#### Atlantic Plywood Corp.

8 Roessler Road  
781-933-1932

#### Windham Wood Industries

13 Cranes Court  
781-932-8572

## YOU DESERVE AN UPGRADE

For four generations Salem Five Insurance Services has been, and still is, committed to supporting our local community and protecting your assets. Getting the best possible coverage at the best possible price for your home, auto and business might feel like an upgrade, but it's just how we do it.

Helping protect and grow businesses and families in Woburn

**Salem Five Insurance**  
445 Main Street  
781.933.3100

**Salem Five Bank**  
443 Main Street  
781.935.2936

**SalemFive**

Keep Talking. We're Listening.

[salemfive.com/insurance](http://salemfive.com/insurance)

BANKING • INSURANCE • INVESTMENTS

Insurance products are not FDIC Insured • No Bank Guarantee • Not Bank Deposits • Not Insured by any Federal Government



# SKYWORKS®

## Billions of Connections, One Solution

Read about us on page 30



Skyworks Solutions, Inc. is an innovator of high performance analog semiconductors connecting people, places and things.

*For more information, please visit our website at [www.skyworksinc.com](http://www.skyworksinc.com)*

20 Sylvan Road, Woburn, MA 01801

USA: 781-376-3000 | Asia: 886-2-2735 0399 | Europe: 33 (0)143548540

[sales@skyworksinc.com](mailto:sales@skyworksinc.com) |

NASDAQ: SWKS |



COMING SOON  
THE FUTURE HOME OF



PART OF  
**Albrecht** Auto Group



394 WASHINGTON ST. • WOBURN, MA 01801  
At The Crossroads Of Rt. 93 & 128



**781.933.1100**



[www.WOBUENTOYOTA.com](http://www.WOBUENTOYOTA.com)

READ ABOUT US ON PAGE 35